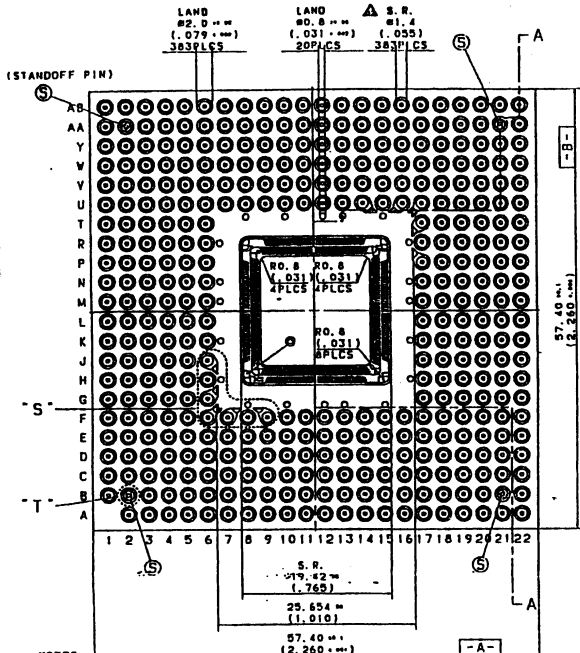
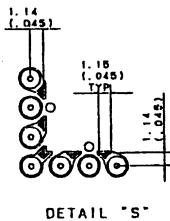
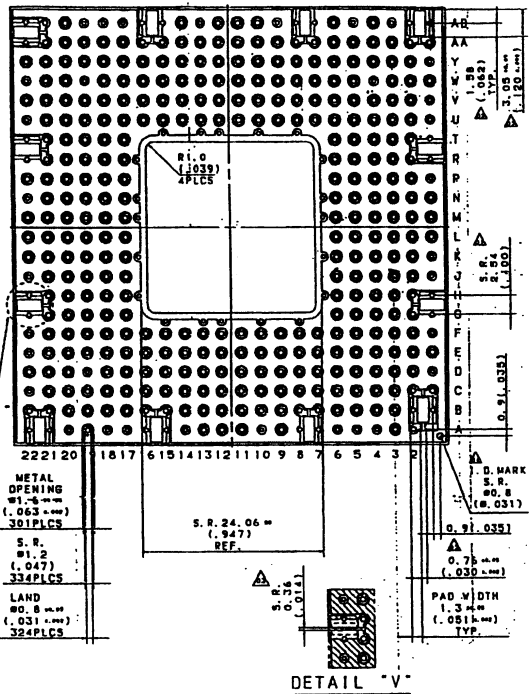
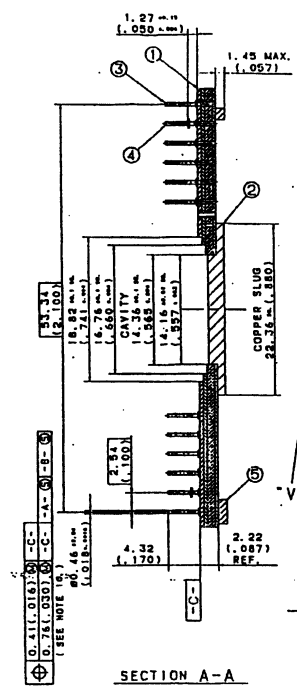


# SSM P/N PPG38302

SIGNATURE AND DATE				DESCRIPTION
APPROVAL	ECN NO.	DATE		
T. LEY	91701	11-09-91		INITIAL RELEASE
S. KRUKMAN	93006	10-01-93		EXTERNAL DESIGN CHANGES ALTERED DRAWING
J. JORDSKI		06-15-95		ADD VSS/VDD EXTENDED LEAD AS A VENDOR OPTION



- NOTES**
- PINS ARE SOLDERED INTO THE BOARD AT THE THROUGH HOLES.
  - S.R. = SOLDER MASK RESIST OPENING.
  - COPPER SLUG IS TO BE CONNECTED TO VSS PLANES.
  - MINIMUM CLEAR B/W LENGTH: 0.42 mm (.0165 inch)
  - MINIMUM UPPER AND LOWER S/W EXPOSURE: 0.97 mm (.0385 inch)
  - CHIP CAPACITOR PART NO. 1: KYOCERA AVX MURATA ERIE OR EQUIVALENT.  
KYOCERA AVX: R66128R322804 (L: 126 mm, W: 060 mm, H: 047 inch MAX.)  
KYOCERA AVX: V06128R322804 (L: 126 mm, W: 060 mm, H: 047 inch MAX.)  
MURATA ERIE: SRM630X762328050 (L: 126 mm, W: 063 mm, H: 049 mm)
  - SOLDER FOR CHIP CAPS: SN170-9010
  - SOLDER FOR ATTACH OF COPPER SLUG: SN170-9010
  - THE VIAS IN THE SEAL AREA ARE TO BE COVERED WITH SOLDER MASK.
  - ANY PACKAGE CAN BE INSERTED TO THE STANDOFF PINS' SOLDER FILLET WITH A "GENTLE PUSH" INTO A PIN STRAIGHTNESS FIXTURE. THE FIXTURE CONSISTS OF .031 inch DIA. HOLES WHICH ARE ON .100 ± .004 inch CENTERS.
  - FLATNESS OF DIE ATTACH: 0.05 mm (.002 inch)
  - FLATNESS OF BACKSIDE OF COPPER SLUG: 0.076 mm (.003 inch)
  - FLATNESS OF PACKAGE: N/A.
  - FLATNESS OF SEAL RING (EXCLUDING COVERING VIAS): N/A.
  - PARALLELISM FROM BACKSIDE OF SLUG TO LOWER BOND SHEET, AND FROM BACKSIDE OF SLUG TO DIE ATTACH SURFACE: N/A.
  - MAISHIITA WILL REPORT THE VALUES OF HDL 13, 14 AND 15, AFTER MEASURING ON THE PRODUCTION PARTS.



SPECIFICATION	
BASE MATERIAL	MODIFIED POLYIMIDE (COPPER FOIL 1/2 oz ± 0.02)
MINIMUM PLATING THICKNESS	
PLATED COPPER	10 μm (0.39 mil) (5) CHIP CAPACITOR
PLATED NICKEL	5 μm (0.20 mil) (4) STANDOFF PIN
PLATED GOLD	0.3 μm (0.012 mil) (3) SINGLE PIN
CHIPS POINT HARDENING	(2) COPPER SLUG
SOLDER MASK RESIST	NYLON (NON-SPRINGBACK)
PIN MATERIAL	PVB
MIN. SOLDER BIP. TIP DIAM.	10 μm (0.39 mil)
PIN HOLD STRENGTH	≥ 21 grams (0.75 oz) MIN.

UNLESS OTHERWISE SPECIFIED DIMENSIONAL TOLERANCES		TITLE
XXX ± .005		
XXXX ± .000		
XXXXX ± .0000		
XXXXXX ± .00005		
DRAWER	DATE	383 PLASTIC PIN GRID ARRAY
R.Mendoza	06-15-95	
ENGINEER	DATE	PKG/DIE CODE & CAVITY: (NW) 0.560
APPROVAL	DATE	DWG NO. JAD1-000316-01
APPROVAL	DATE	REV. 2
	SCALE	SHEET 1 of 5

