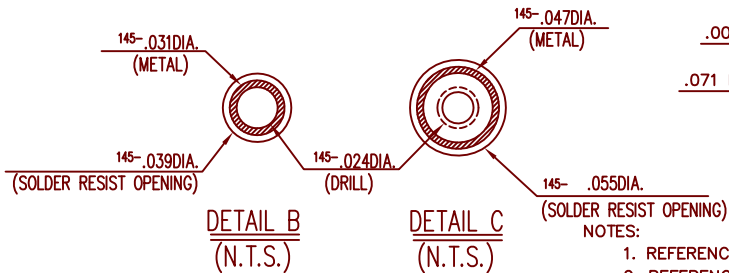
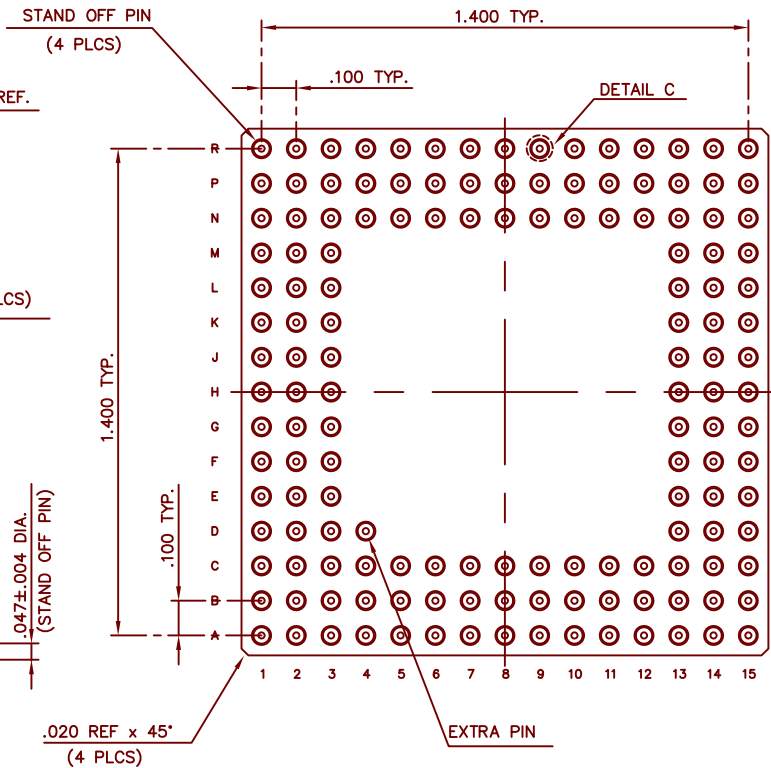
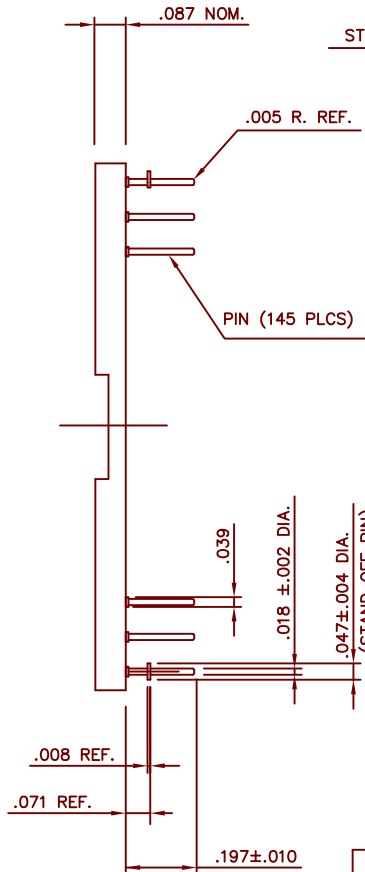
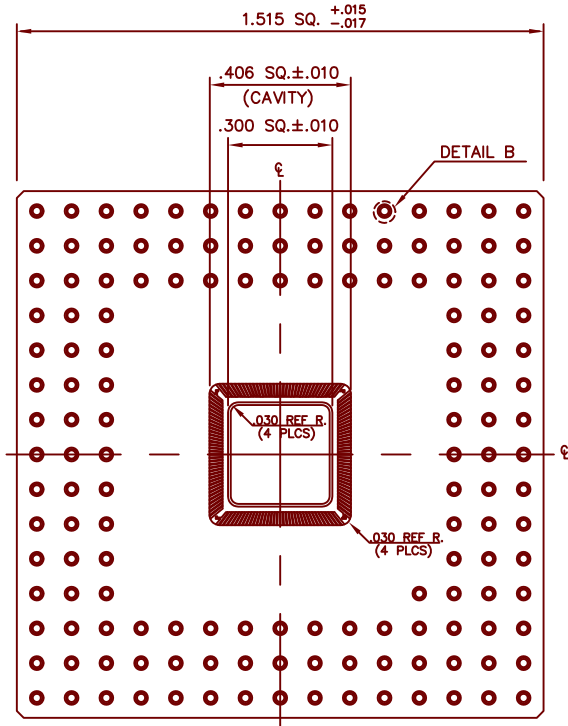


SSM P/N PPG14404

REVISIONS			
LTR.	DESCRIPTION	DATE	APPROVAL
B	UPDATED DWG PER KYOCERA DWG# PW-S98080-A	8-19-99	
C	CHANGED STANDOFF PIN DIAMETER (.040 TO .047)	12-10-99	

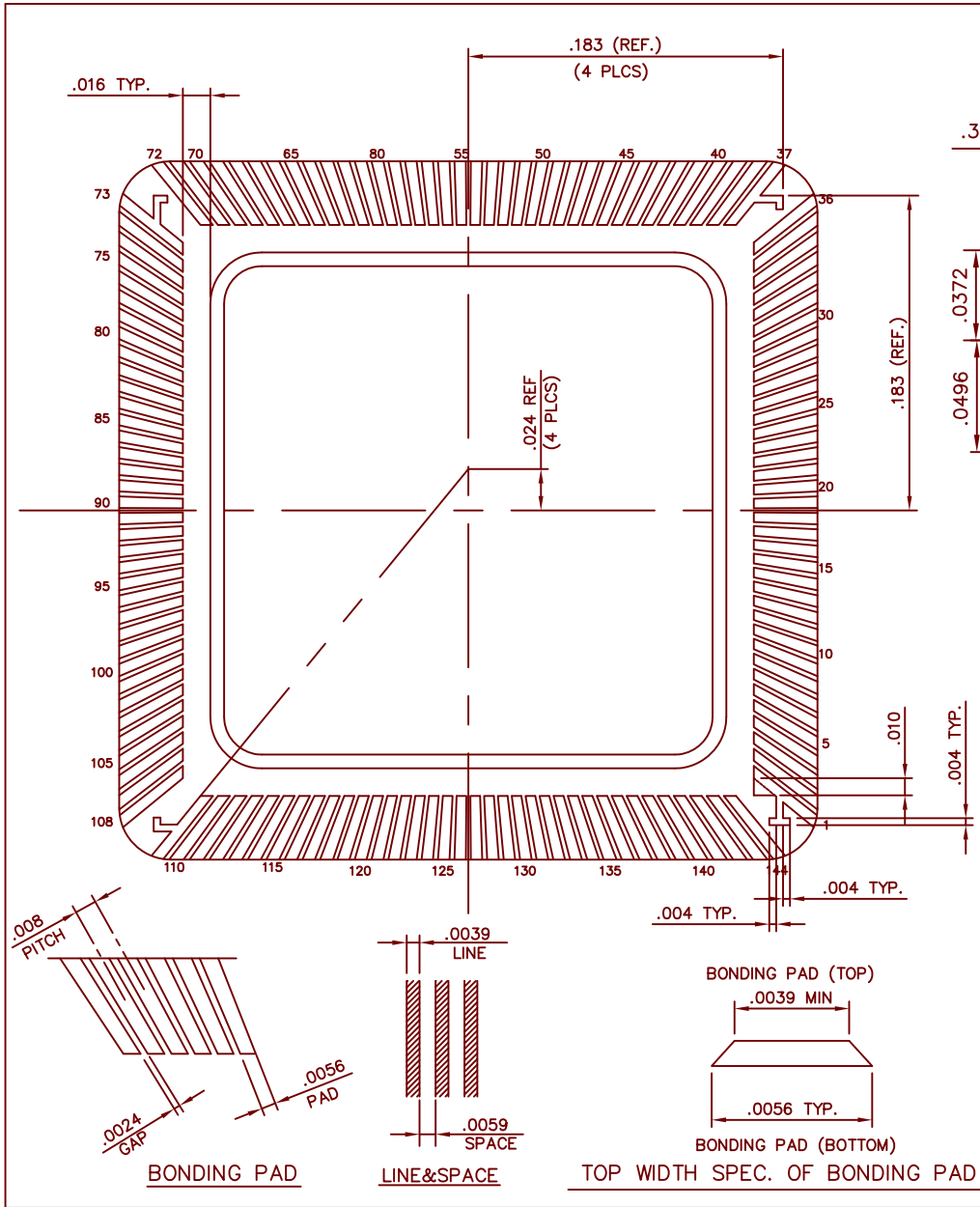


- NOTES:
1. REFERENCE KYOCERA DWG #PW-S98080-B.
 2. REFERENCE AMI 6300051.

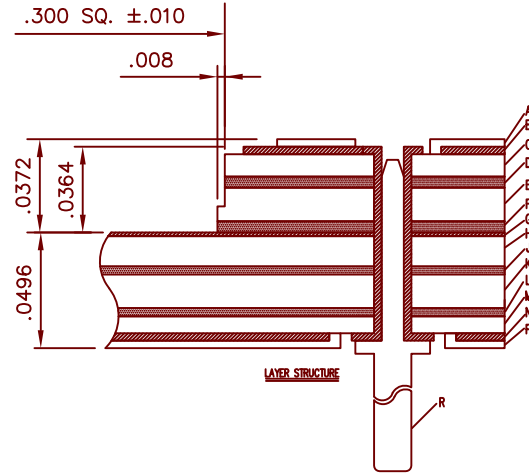
Controlling Units millimeters <input type="checkbox"/> inches <input checked="" type="checkbox"/>	PJ Drawn	1-8-99	145 LEAD PPGA		
	Check	Date	1.515" SQ. BODY		
Approved	Date	Code Ident	Size	Drawing No.	Rev
		NB	B	6300628	C
F010029.B	Approved	Date	Scale	CAD File No.	Sheet
			3:1	0628PK0	1 of 2



SSM P/N PPG14404



REVISIONS			
LTR.	DESCRIPTION	DATE	APPROVAL



NAME	MATERIAL	(Unit:inch) THICKNESS (BEFORE LAY UP)	
A	SOLDER RESIST TOP	PSR-4000 AUSS (TAYO)	.0008
B	MP-1(T/H LAND,BONDING PAD,SIGNAL)	Cu PLATE / Cu FOIL	.0006 / .0005
C	CORE 1	CCL-HL830 (MITSUBISHI GAS)	.0118
D	PREPREG 1	GHPL830 (MITSUBISHI GAS)	.0039
E	CORE 2	CCL-HL830 (MITSUBISHI GAS)	.0157
F	PREPREG 2	GHPL830 (MITSUBISHI GAS)	.0039
G	MP-2(DIE ATTACH,PLATING TRACE)	Cu FOIL	.0005
H	CORE 3	CCL-HL830 (MITSUBISHI GAS)	.0157
J	PREPREG 3	GHPL830 (MITSUBISHI GAS)	.0039
K	CORE 4	CCL-HL830 (MITSUBISHI GAS)	.0157
L	PREPREG 4	GHPL830 (MITSUBISHI GAS)	.0039
M	CORE 5	CCL-HL830 (MITSUBISHI GAS)	.0079
N	MP-3(T/H LAND)	Cu PLATE / Cu FOIL	.0006 / .0005
P	SOLDER RESIST BOTTOM	PSR-4000 AUSS (TAYO)	.0008
R	PIN	Fe-Ni-Co ALLOY	

(Unit:inch)	
ELECTROLYTIC PLATING	THICKNESS
Ni	.0002MIN.
Au	.00002MIN.

BD. PAD	BALL PAD	BD. PAD	BALL PAD	BD. PAD	BALL PAD	BD. PAD	BALL PAD	BD. PAD	BALL PAD	BD. PAD	BALL PAD	BD. PAD	BALL PAD	BD. PAD	BALL PAD	BD. PAD	BALL PAD
1	D3	19	J3	38	P3	57	R10	76	M14	95	F14	114	A13	133	A5		
2	C2	20	J1	39	R2	58	P9	77	L13	96	F13	115	B11	134	B5		
3	B1	21	K1	40	P4	59	P10	78	N15	97	E15	116	A12	135	A4		
4	D2	22	J2	41	N5	60	N10	79	L14	98	E14	117	C10	136	A3		
5	E3	23	K2	42	R3	61	R11	80	M15	99	D15	118	B10	137	B4		
6	E2	24	K3	43	P5	62	P11	81	K13	100	C15	119	A11	138	C5		
7	C1	25	L1	44	R4	63	R12	82	K14	101	D14	120	B9	139	B3		
8	E1	26	L2	45	N6	64	R13	83	L15	102	E13	121	C9	140	A2		
9	D1	27	M1	46	P6	65	P12	84	J14	103	C14	122	A10	141	C4		
10	F3	28	N1	47	R5	66	N11	85	J13	104	B15	123	A9	142	C3		
11	F2	29	M2	48	P7	67	P13	86	K15	105	D13	124	BB	143	B2		
12	E1	30	L3	49	N7	68	R14	87	J15	106	C13	125	AB	144	A1		
13	G2	31	N2	50	R6	69	N12	88	H14	107	B14	126	CB				
14	G3	32	P1	51	R7	70	N13	89	H15	108	A15	127	C7				
15	F1	33	M3	52	P8	71	P14	90	H13	109	C12	128	A7				
16	G1	34	N3	53	R8	72	R15	91	G13	110	B13	129	A6				
17	H2	35	P2	54	NB	73	M13	92	G15	111	A14	130	B7				
18	H1	36	R1	55	N9	74	N14	93	F15	112	B12	131	B6				
	H3	37	N4	56	R9	75	P15	94	G14	113	C11	132	CB				

Controlling Units millimeters <input type="checkbox"/> inches <input checked="" type="checkbox"/> .X=±.1 .XX=±.02 .XXX=±.005 .XXXX=±.0002 Angles=±2°	PJ Drawn	1-8-99	Date			
	Check		Date			
	Approved		Date			
	Approved		Date			
F010029.B	145 LEAD PPGA 1.515" SQ. BODY		Code Ident	Size	Drawing No.	Rev
	NB	B	6300628	143		B2
	Scale	N.T.S.	CAD File No.	0628PK0	Sheet 2 of 2	

