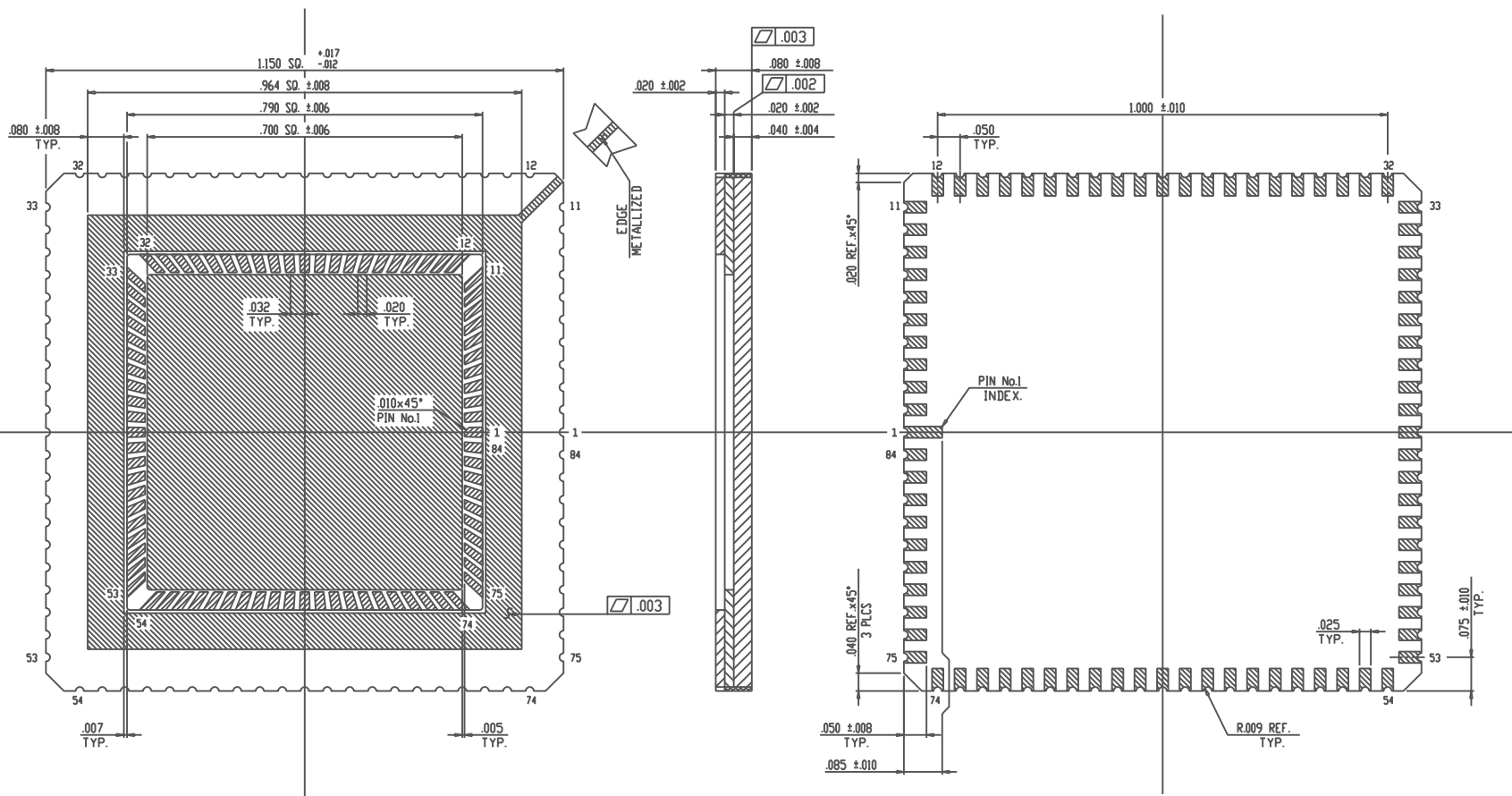


SSM P/N LCC08423



- NOTES;**
1. ALL EXPOSED METALLIZED AREA SHALL BE GOLD PLATED 60 MICRO INCHES MIN. THK. OVER NICKEL PLATE UNLESS OTHERWISE SPECIFIED IN PURCHASE ORDER.
 2. FLATNESS PERTAINS TO METALLIZED PADS ONLY.
 3. SEAL AREA AND DIE ATTACH AREA SHALL BE ISOLATED FROM ALL LEADS. (ZERO GROUND)

MODIFICATIONS

NAME	84 LCC (700 SQ. CAV.)	TOLERANCES UNLESS OTHERWISE SPECIFIED	±.005	THIRD ANGLE PROJECTION	APPROVE DATE	XDD-84C	S=0 D=0
SCALE	6 / 1	MATERIAL	KYOCERA-440	DRAWN	S.M	CHECKED	K.M.T.
DATE DRAWN	CHEKED	APPROVED					
DRAWING NO. PB-C86131						SHEET	

PB-13050 (HG-84C) MOD.



www.spectrum-semi.com Phone: 408-435-5555 Fax: 408-435-8226