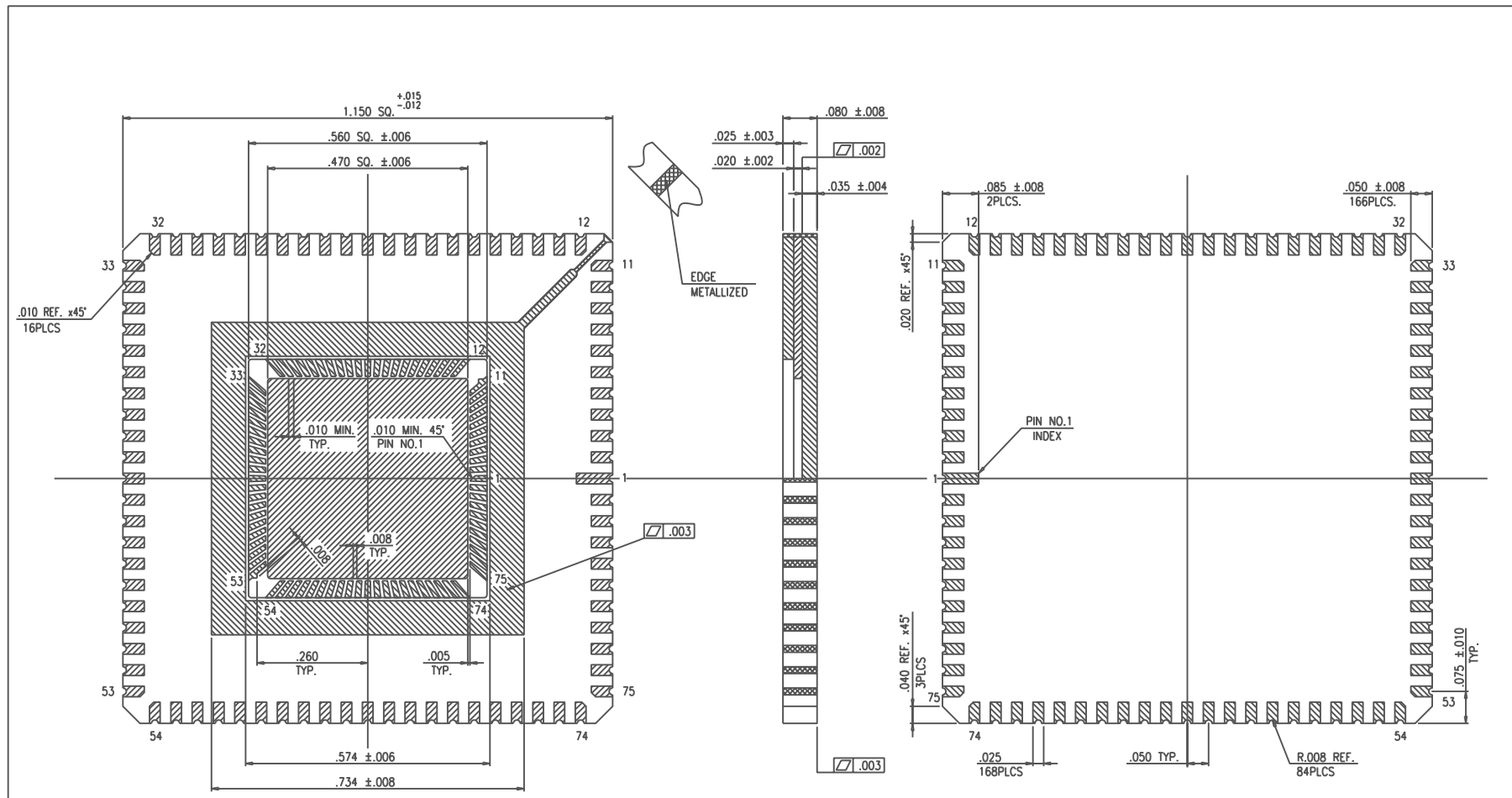


SSM P/N LCC08422

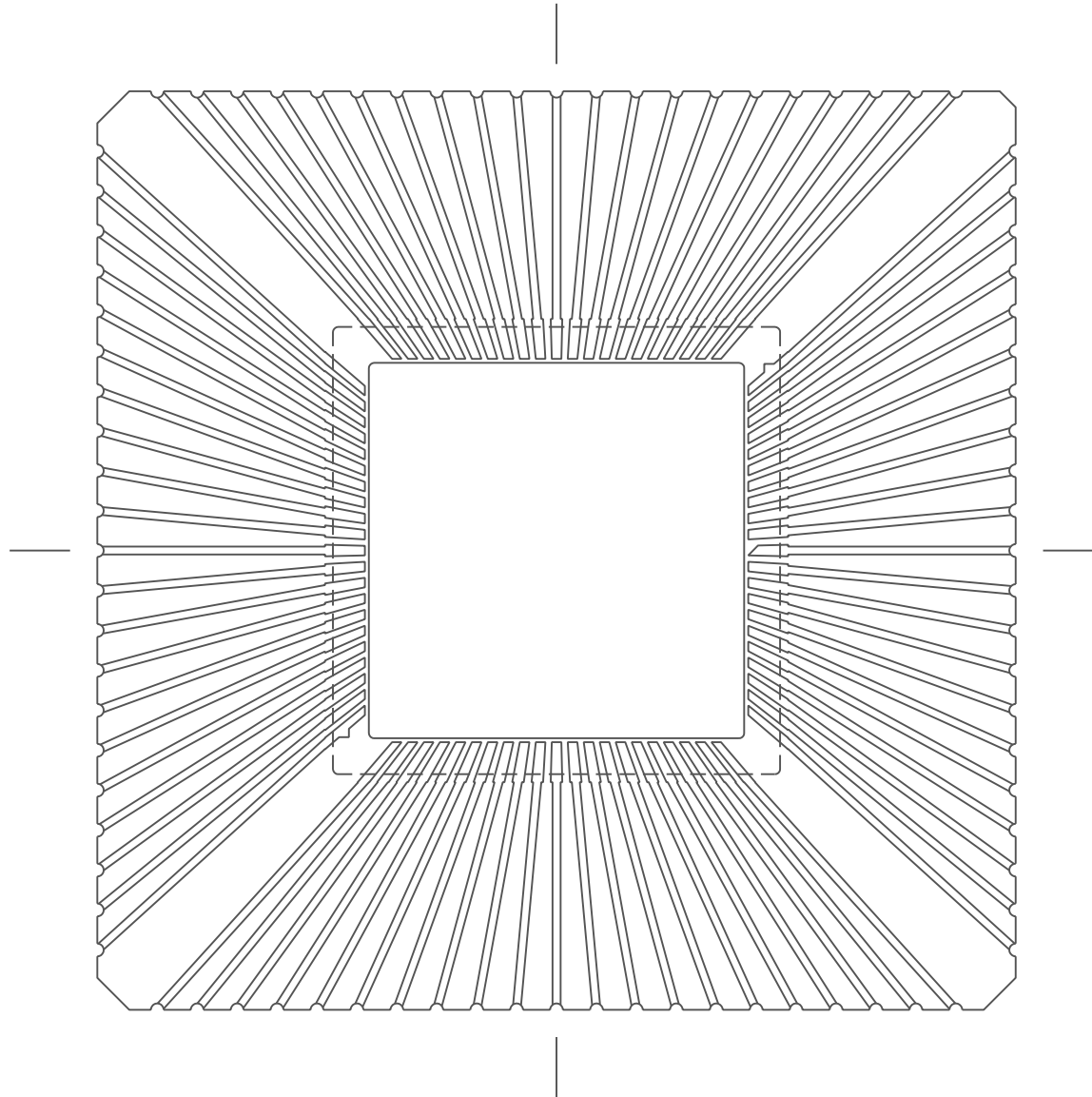


NOTES;

1. ALL EXPOSED METAL AND METALLIZED AREA SHALL BE GOLD PLATED 60 MICRO INCHES MIN. THK. OVER NICKEL PLATE UNLESS OTHERWISE SPECIFIED IN PURCHASE ORDER.
2. SEAL RING AND DIE ATTACHE SHALL BE ELECTRICALLY ISOLATED FROM ALL LEADS (ZERO GROUND)

					NAME 84LCC (.470 SQ. CAV.)		TOLERANCES: UNLESS OTHERWISE SPECIFIED ± .005 MINI HOLE PRODUCTION		DRAWN S.M.		CHECKED UE		APPROVED K.I.		DATE NOV.10.'98	
					SCALE 6/1		MATERIAL KYOCERA A-440		DRAWING NO. PB-C98D25						SHEET 1/2	
MODIFICATIONS					KYOCERA		KYOCERA CORPORATION KYOTO JAPAN									
CHANGE					DATE		DRAWN		CHECKED		APPROVED					

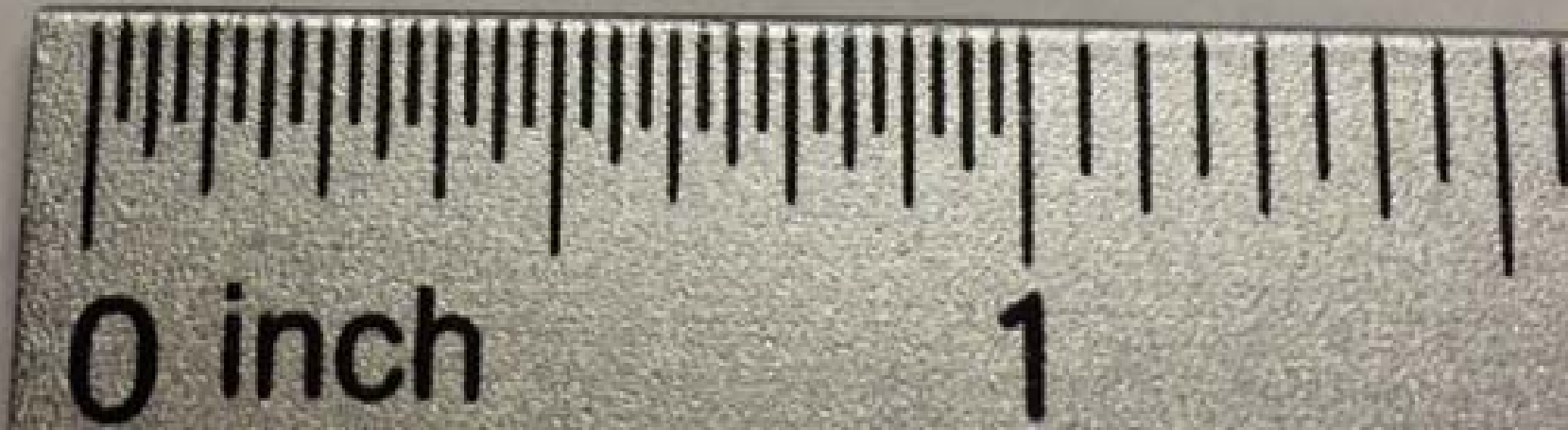
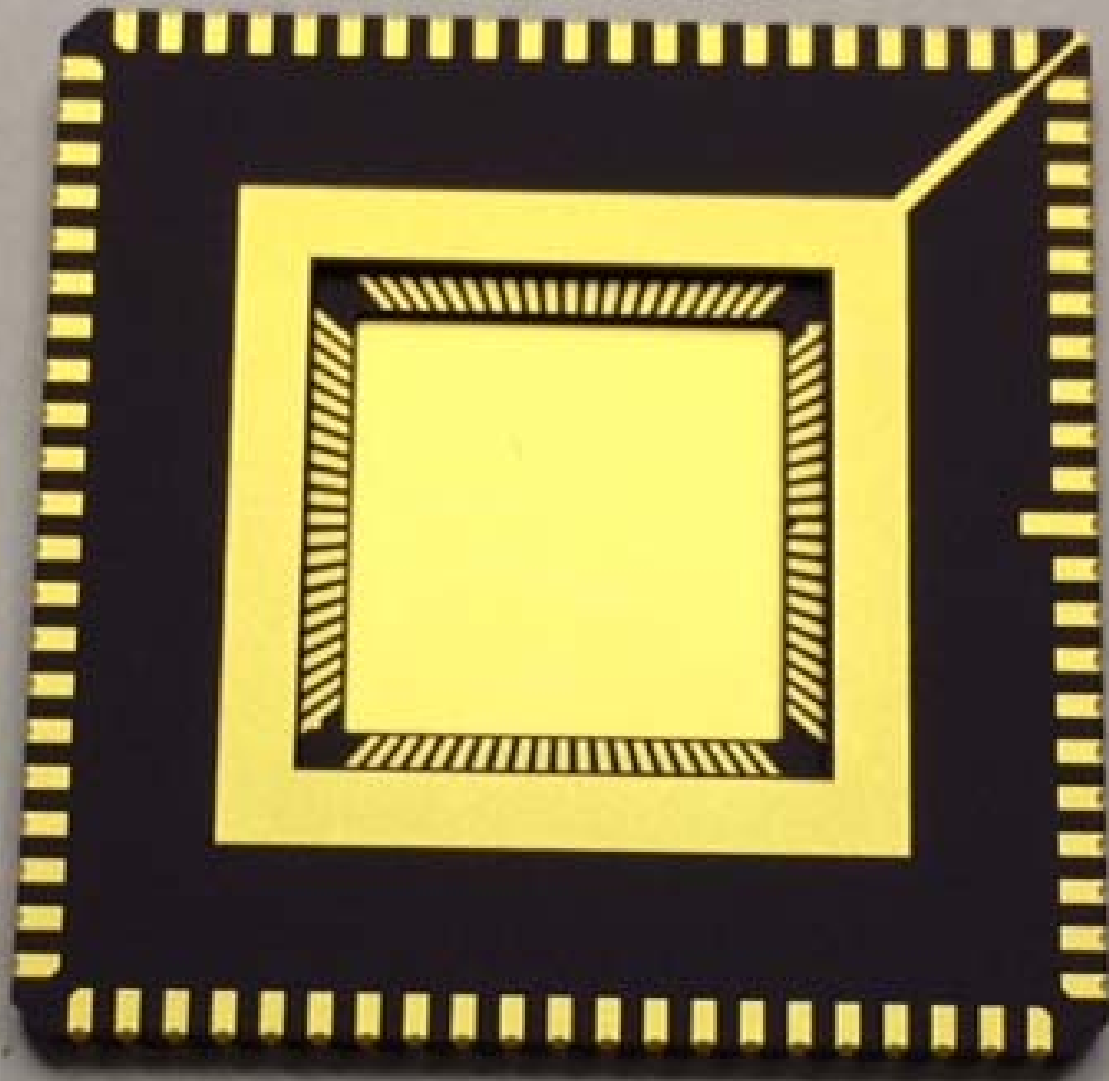


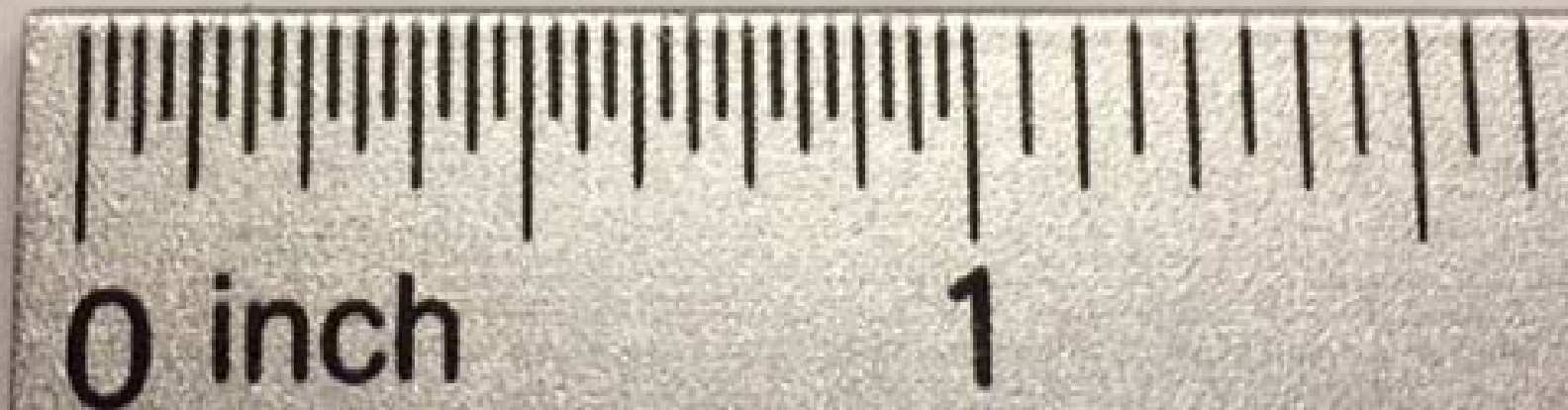
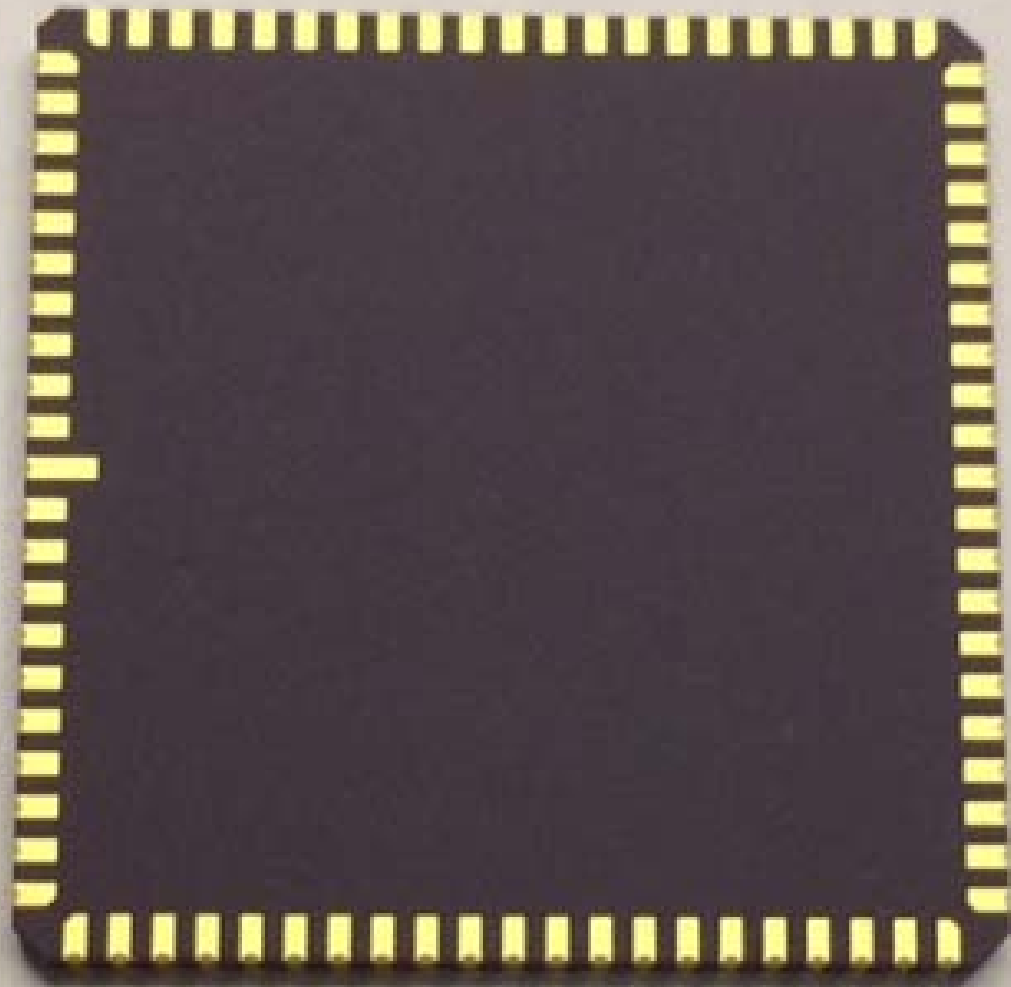


2PA

MODIFICATIONS						NAME	84LCC (.470 SQ. CAV.)	TOLERANCES UNLESS OTHERWISE SPECIFIED	DRAWN	CHECKED	APPROVED	DATE	
						SCALE	10/1		S.M	U.E	K.I	M.S	NOV.10 '98
								ISO FIRST ANGLE PROJECTION					
	CHANGE	DATE	DRAWN	CHECKED	APPROVED		KYOCERA CORPORATION KYOTO JAPAN	DRAWING NO.	PB-C98D25		SHEET	2/2	







0 inch

1