

- NOTES:
1. ALL EXPOSED METALLIZED AREA SHALL BE GOLD PLATED 60 MICRO INCHES MIN. THK. OVER NICKEL PLATE UNLESS OTHERWISE SPECIFIED IN PURCHASE ORDER.
 2. FLATNESS PERTAINS TO METALLIZED PADS ONLY.
 3. SEAL AREA AND DIE ATTACH AREA SHALL BE ISOLATED FROM ALL LEADS. (ZERO GROUND)
 4. CAPACITANCE; 3.0 P.F. MAX. AT 1000 Hz.

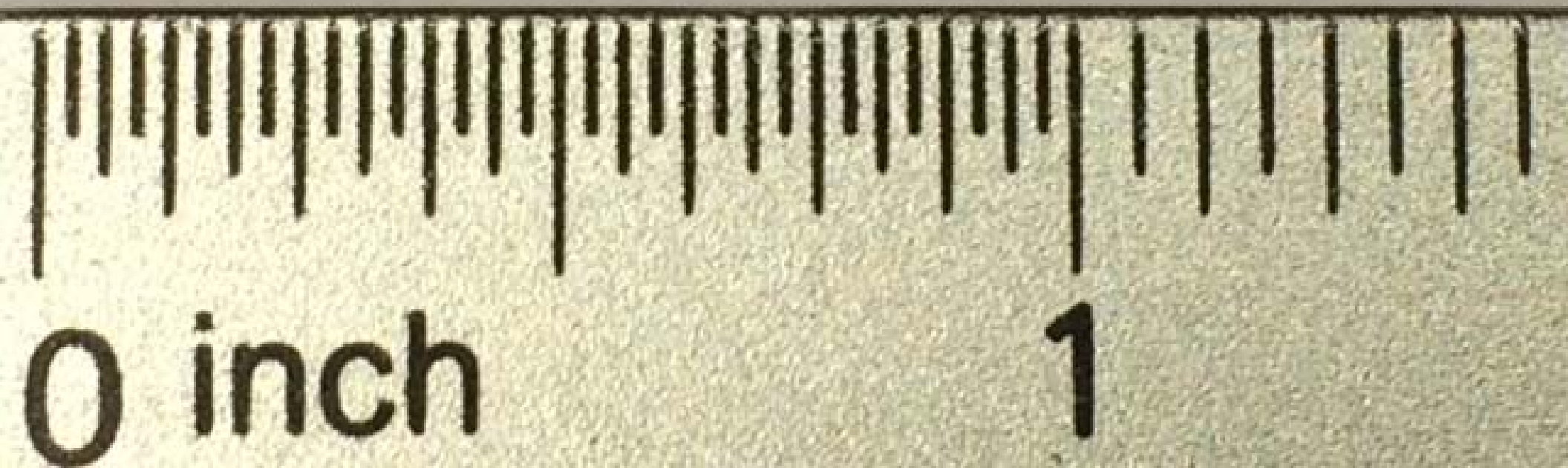
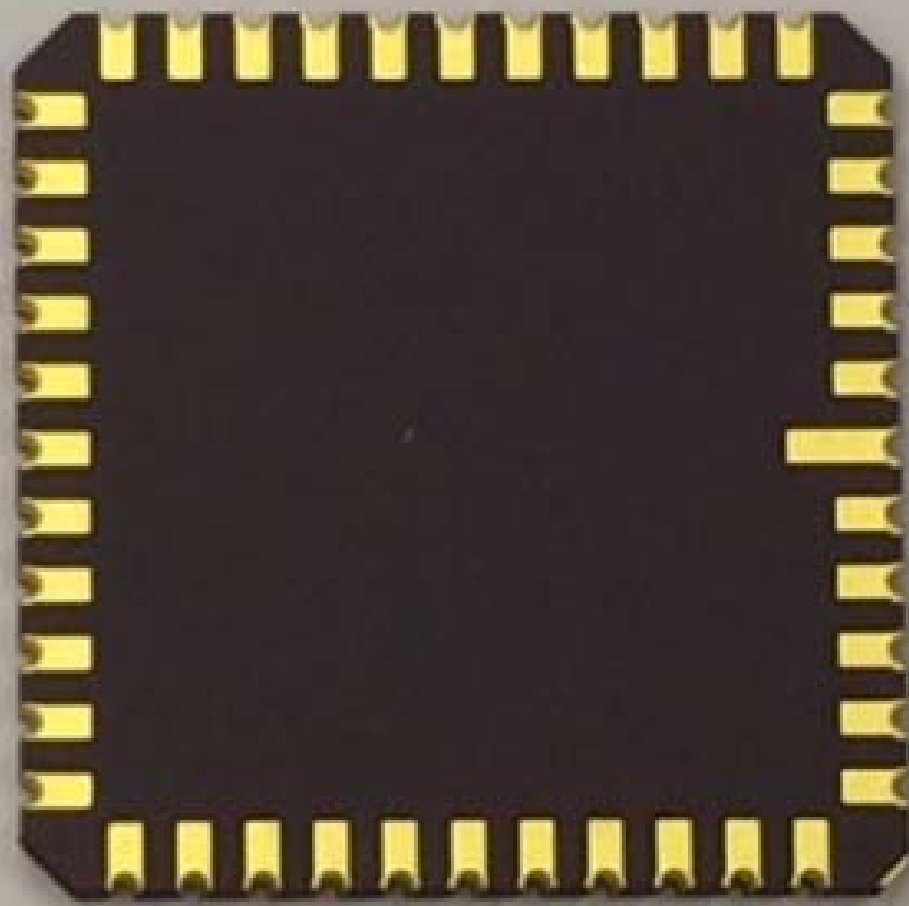
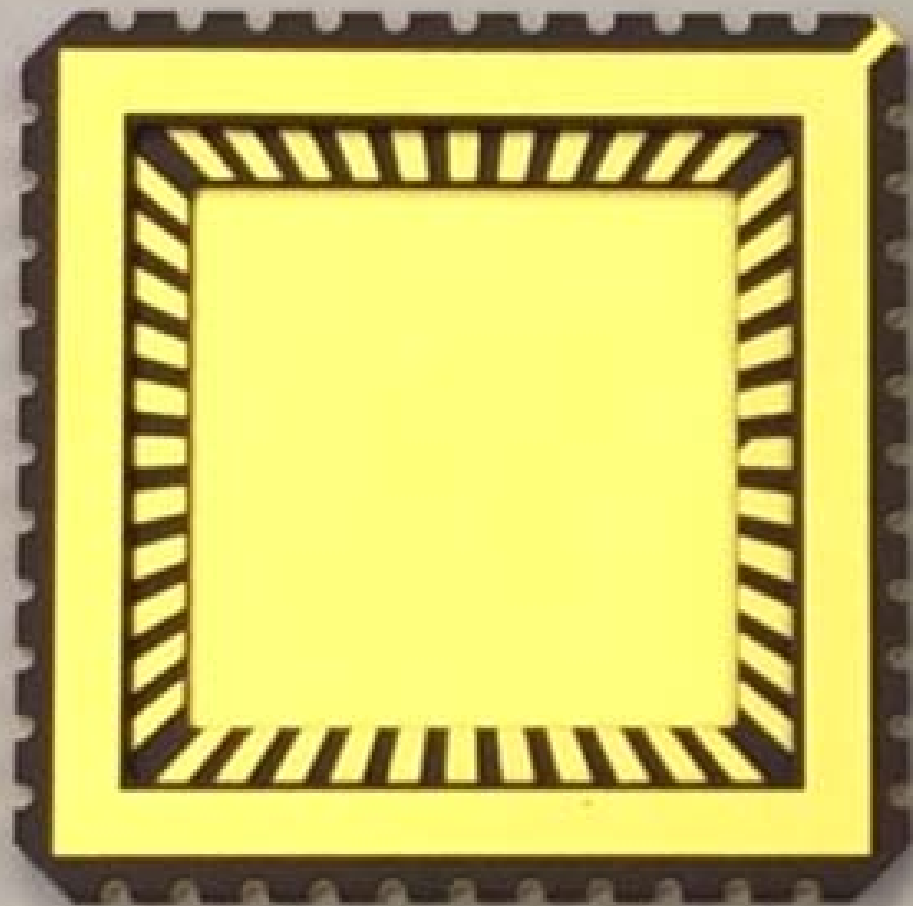
CONTROLLED 1-16-03

MODIFICATIONS

NAME	44 LCC (.400 SQ. CAV.)	TOLERANCES UNLESS OTHERWISE SPECIFIED	±.005	THIRD ANGLE PROJECTION	DRAWING NO.	PB-C89591	CHEK - 44-01	APPROVED	DATE	NOV.22.89
SCALE	10/1	MATERIAL	KYOCERA-440							
CHANGE		DATE	DRAWN	CHECKED	APPROVED					

PB-C86413 (DE0-44C) MOD.





0 inch

1