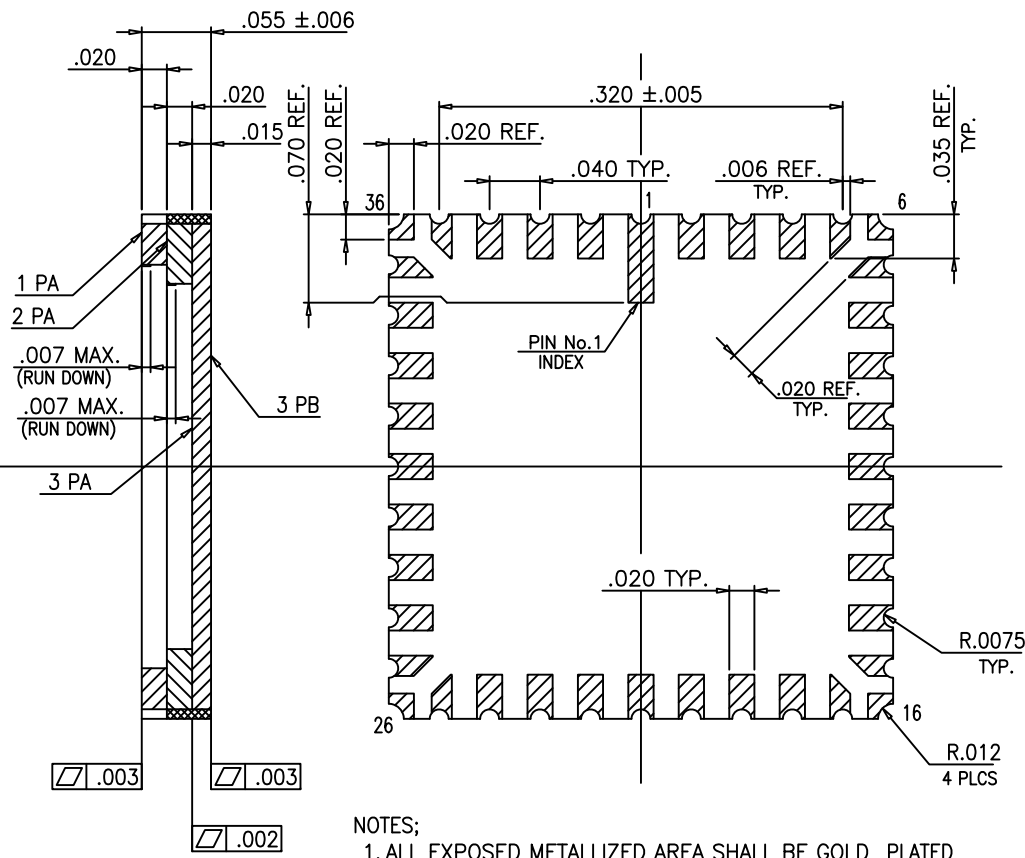
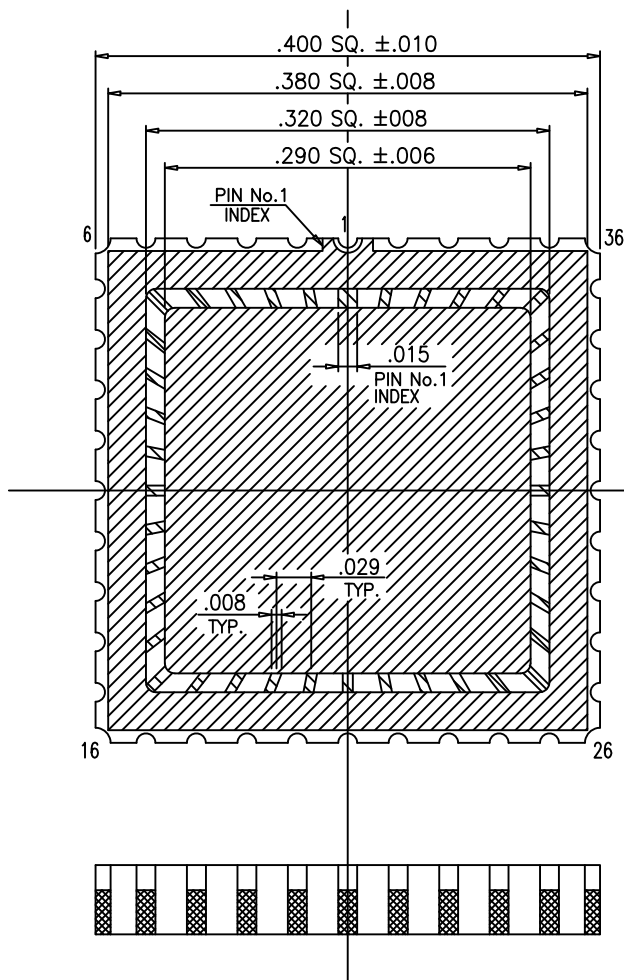


SHALLOW



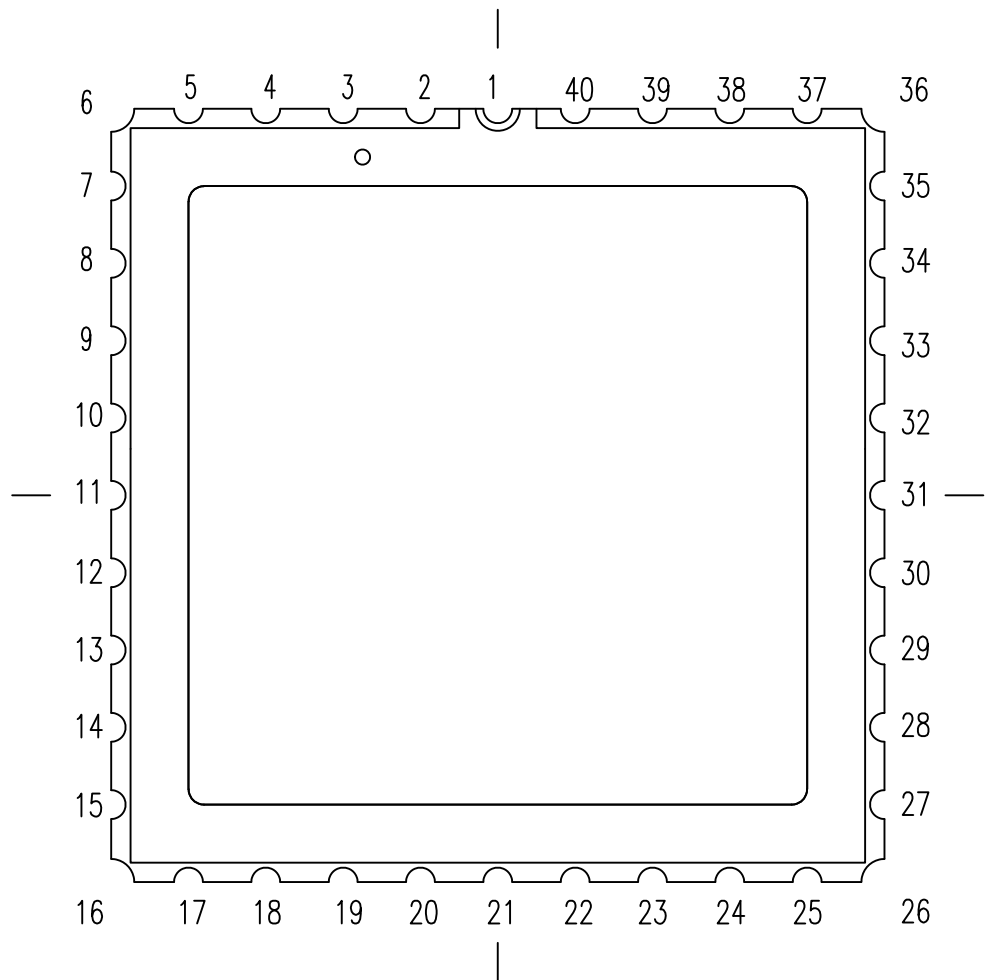
- NOTES;
1. ALL EXPOSED METALLIZED AREA SHALL BE GOLD PLATED 60 MICRO INCHES MIN. THK. OVER NICKEL PLATED UNLESS OTHERWISE SPECIFIED IN PURCHASE ORDER.
 2. FLATNESS METALLIZED PAD'S ONLY.
 3. SEAL RING AREA SHALL BE CONNECTED TO PAD No.3.
 4. DIE ATTACH AREA SHALL BE CONNECTED TO PAD No.40.
 5. LEAD RESISTANCE 0.3 MAX.

MODIFICATIONS						
	CHANGE					

NAME	40 LCC (.290 SQ. CAV)	TOLERANCES: UNLESS OTHERWISE SPECIFIED	DRAWN	CHECKED	APPROVED	DATE
SCALE	10/1	±.005 THIRD ANGLE PROJECTION	M.H	K.Y	K.H	JUN.14.'00
MATERIAL	KYOCERA A-440		DRAWING NO.			SHEET
	KYOCERA CORPORATION KYOTO JAPAN		PB-CA0926			1/5

PB-45058 (SDA-40C) MOD.





1 PA

MODIFICATIONS						NAME	40 LCC (.290 SQ. CAV)	TOLERANCES: UNLESS OTHERWISE SPECIFIED	DRAWN	CHECKED	APPROVED	DATE	
						SCALE	15/1		MATERIAL	M.H	K.Y	K.H	M.S
								THIRD ANGLE PROJECTION					
	CHANGE	DATE	DRAWN	CHECKED	APPROVED		KYOCERA CORPORATION KYOTO JAPAN	DRAWING NO.	PB-CA0926		SHEET	2/5	

