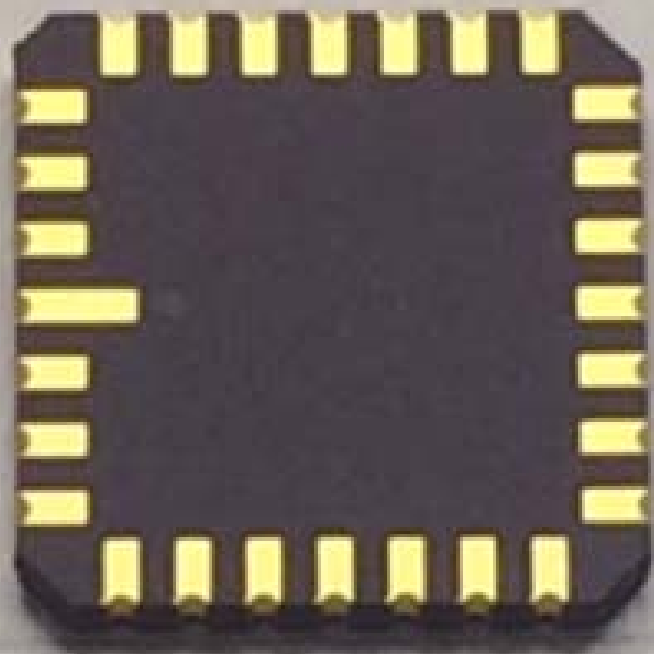
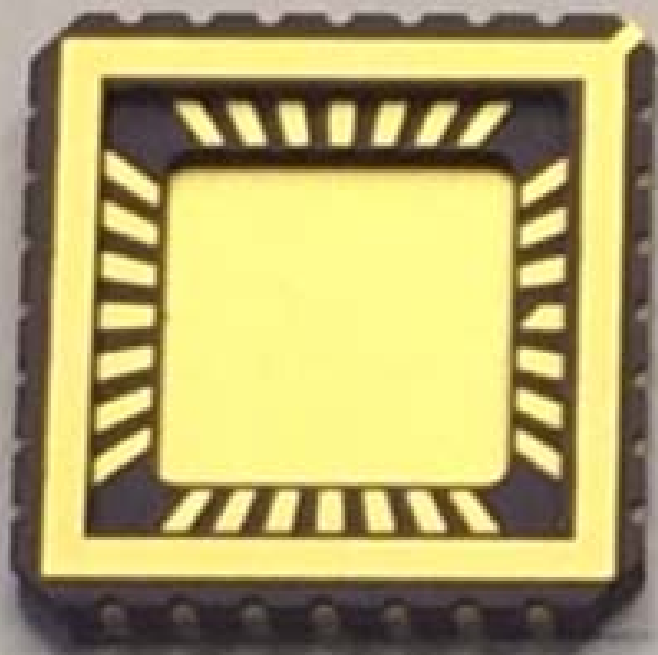


- NOTES:
1. ALL EXPOSED METALLIZED AREA SHALL BE GOLD PLATED 60 MICRO INCHES MIN. THK. OVER NICKEL PLATED UNLESS OTHERWISE SPECIFIED PURCHASE ORDER.
 2. FLATNESS METALLIZED PADS ONLY.
 3. SEAL AREA AND DIE ATTACH AREA SHALL BE ISOLATED FROM ANY LEADS. (ZERO GROUND)

| | | | | | | | |
|---------------|----------|-----------------------|----------------------------|----------|-------------|----------|------------|
| MODIFICATIONS | NAME | 28 LCC (250 SQ. CAV.) | TOLERANCES: | DRAWN | CHECKED | APPROVED | AFO-28C |
| | SCALE | 10/1 | UNLESS OTHERWISE SPECIFIED | T.K | T.J | Y.S | DATE |
| | MATERIAL | KYOCERA A-440 | $\pm .005$ | | | | JUL.03.'84 |
| | | | HARD HOLE PROTECTION | | | | |
| CHANGE | DATE | DRAWN | CHECKED | APPROVED | DRAWING NO. | | SHEET |
| | | | | | PB-44823 | | |





0 inch

1