

NOTES;

1. ALL EXPOSED METALLIZED AREA SHALL BE GOLD PLATED 60 MICRO INCHES MIN. THK. OVER NICKEL PLATE UNLESS OTHERWISE SPECIFIED IN PURCHASE ORDER.
2. FLATNESS PERTAINS TO METALLIZED PADS ONLY.
3. SEAL AREA AND DIE ATTACH AREA SHALL BE ISOLATED FROM ALL LEADS. (ZERO GROUND)

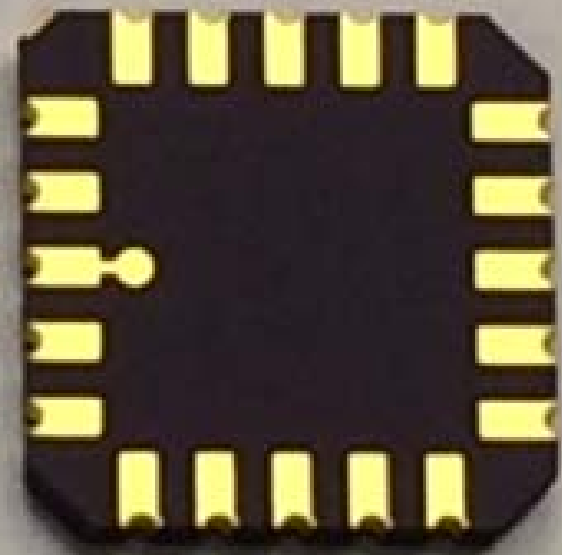
DETAIL " " " " " A " " " " "

MODIFICATIONS						NAME	20 LCC (.160 SQ. CAV.)	TOLERANCES: UNLESS OTHERWISE SPECIFIED	± .005	THIRD ANGLE PROJECTION	DRAWN	CHECKED	APPROVED	DATE
						SCALE	10 / 1	MATERIAL	KYOCERA A-440		S.I	S.M	T.T	Y.S
						ADD; DIMENSIONS	'89.9.7	S.I	S.M	T.T	Y.S			
						CHANGE	DATE	DRAWN	CHECKED	APPROVED	KYOCERA	KYOCERA CORPORATION KYOTO JAPAN	DRAWING NO.	PB-C88405-A

PB-C86309(CB0-20CZ)MOD.



Ph: 408.435.5555 email: ssm\_sales@spectrum-semi.com



0 inch