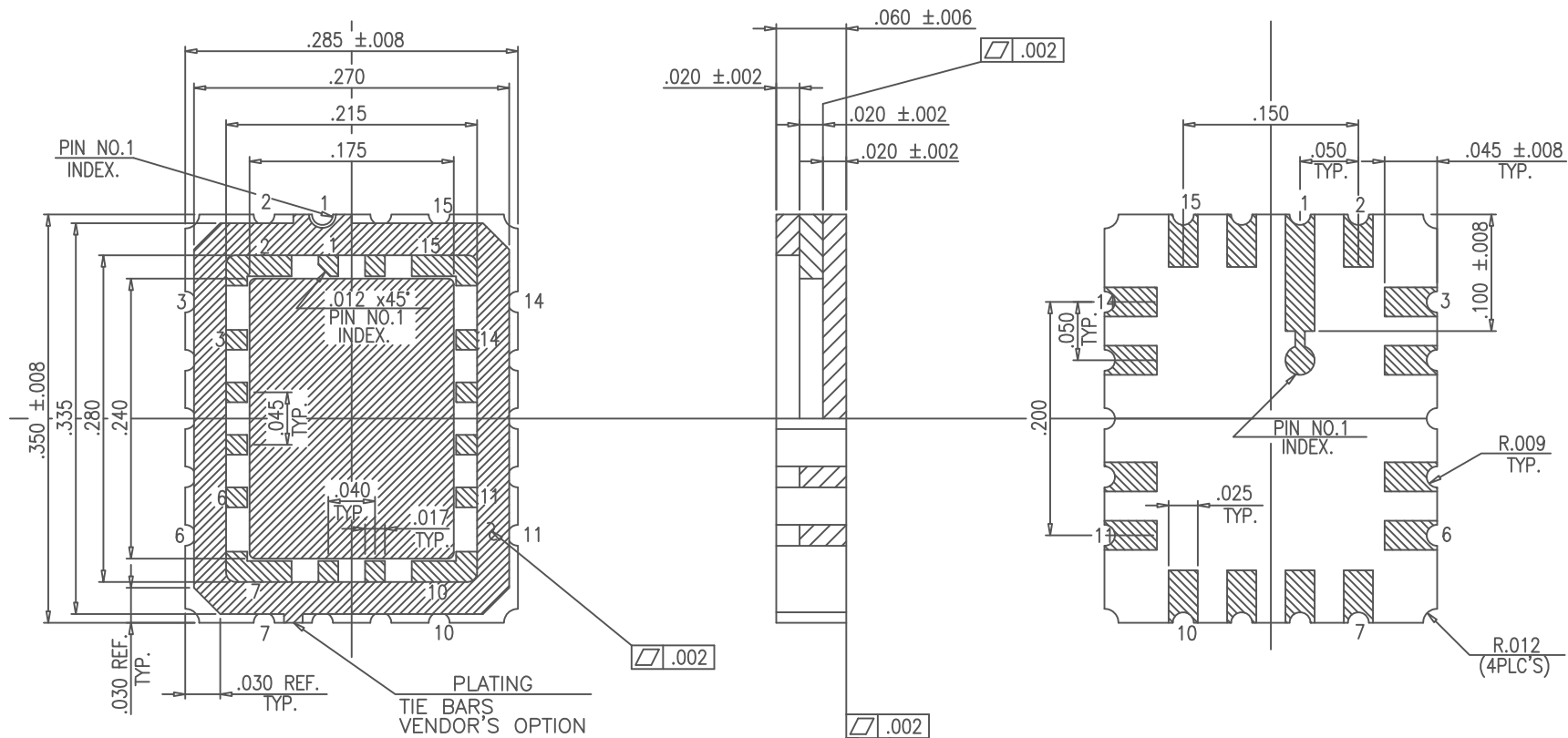


SSM P/N LCC01630

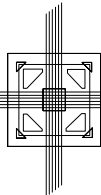


NOTES

1. ALL EXPOSED METALLIZED AREA SHALL BE GOLD PLATED 60 MICRO INCH MIN. THK. OVER NICKEL PLATED UNLESS OTHERWISE SPECIFIED PURCHASE ORDER.
2. FLATNESS METALLIZED PADS ONLY.
3. SEAL AREA AND DIE ATTACH AREA SHALL BE ISOLATED FROM ANY LEADS. (ZERO GROUND)

MODIFICATIONS						NAME	16LCC (.240X.175 CAV.)	TOLERANCES:	DRAWN	CHECKED	APPROVED	DATE
						SCALE	10/1	UNLESS OTHERWISE SPECIFIED $\pm .005$	S.I	T.I	T.O	Y.S
						MATERIAL	KYOCERA A-440	THIRD ANGLE PROJECTION	DRAWING NO.			SHEET
CHANGE					DATE	DRAWN	CHECKED	APPROVED	PB-C88243			/

FC-16C (PB-92280)MOD.



SPECTRUM
SEMICONDUCTOR MATERIALS, INC.

www.spectrum-semi.com Ph: 408-435-5555 Fax: 408-435-8226

