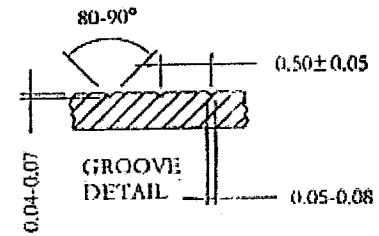
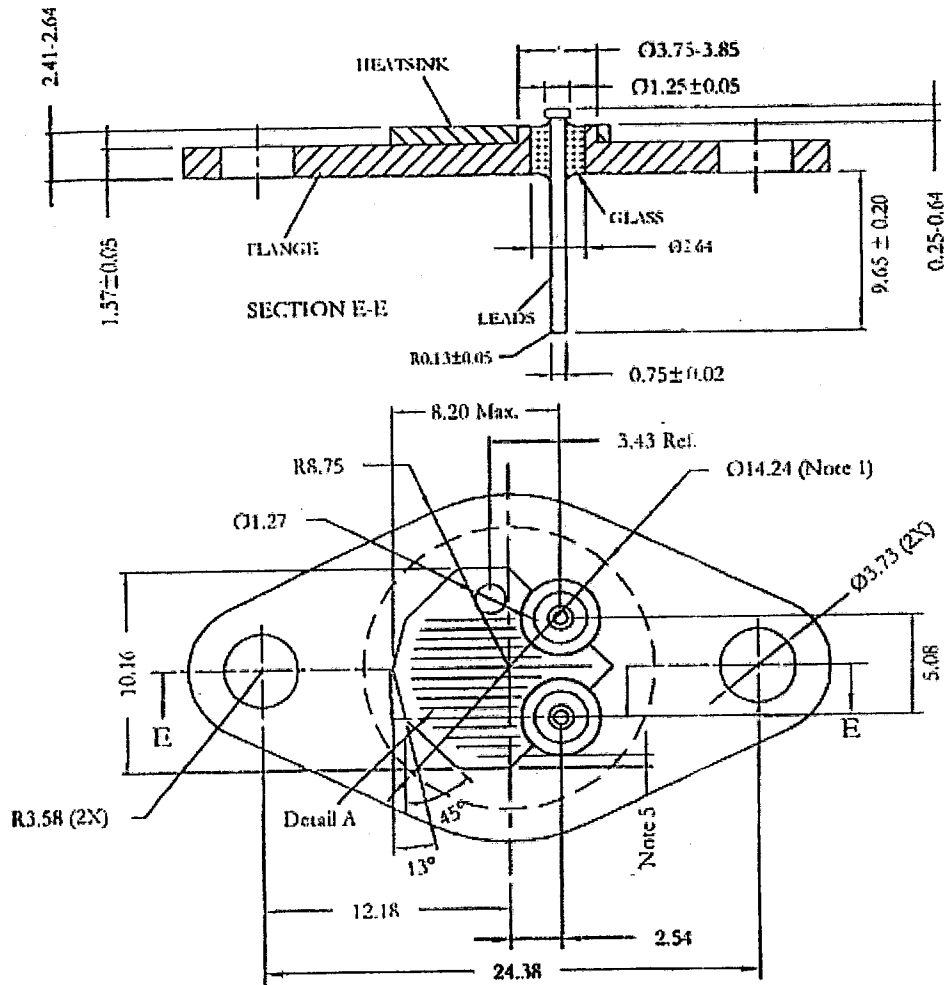


SSM P/N HDR06603



Notes:

1. Sealing plane must be flat within 0.00 mm concave to 0.10 mm convex within 15.24 diameter from center of header.
2. Maximum allowable barr 0.03 mm.
3. Materials:
 - 3.1 Flange: Carbon steel C1010 or any engineering approved material.
 - 3.2 Leads : Fe Ni Alloy 52
 - 3.3 Heatsink : Copper OFHC
 - 3.4 Glass : For compression seal
4. Brazing : Sn/Cu or Ag/Cu Alloy
5. Electroless nickel plating 3.81-6.35 microns.

