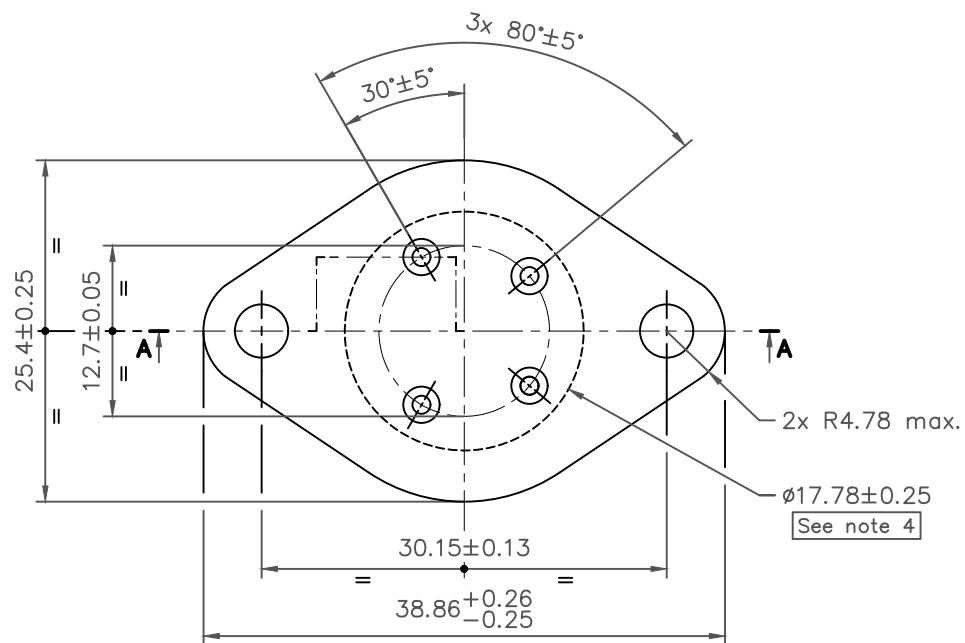
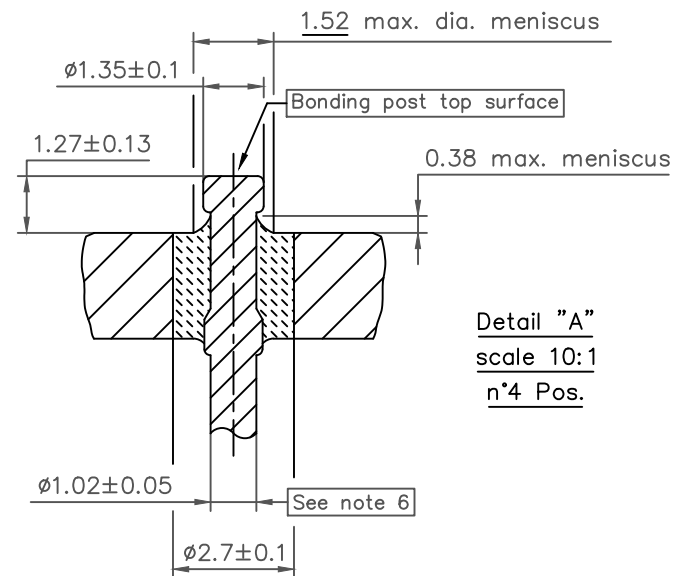


Sec. A-A



EXTENSION	GLASS COLOR	PLATING
11	Blue	See note 7



- Notes:
- 1 Flange: steel EN 10139-DC04
 - 2 Leads: ASTM F30-Alloy 52
 - 3 Compression glass seal
 - 4 Flatness this area: 0.013 tir max.
 - 5 For deburr: break sharp edge, 0.05 max. radius.
 - 6 Any bent pin shall fall within a 2.54 dia. circle concentric with the embedded end of the pin.
 - 7 Finish: 5.08µm minimum electrolytic nickel on header & pins prior to glass sealing, 1.27+3.18µm electroless nickel over preplate. (Combined thickness not to exceed 11.43µm).

Scale	Chairman	Designer		Material	REVIEWS	Edition	Sight (METRIC mm)	
3:1	Soffientini	Rossi		See notes		01	A3	
Sintermetalglass Srl Via Gramsci, 44 - 20090 OPERA (MI) Tel.02-57600376 Fax.02-57600924				General Roughness	1	Emission	12-04-21	
				General Tolerances where not specified	2			12-04-2021
				ISO 2768-mH	3			Design N°
					4			SMG 100.092