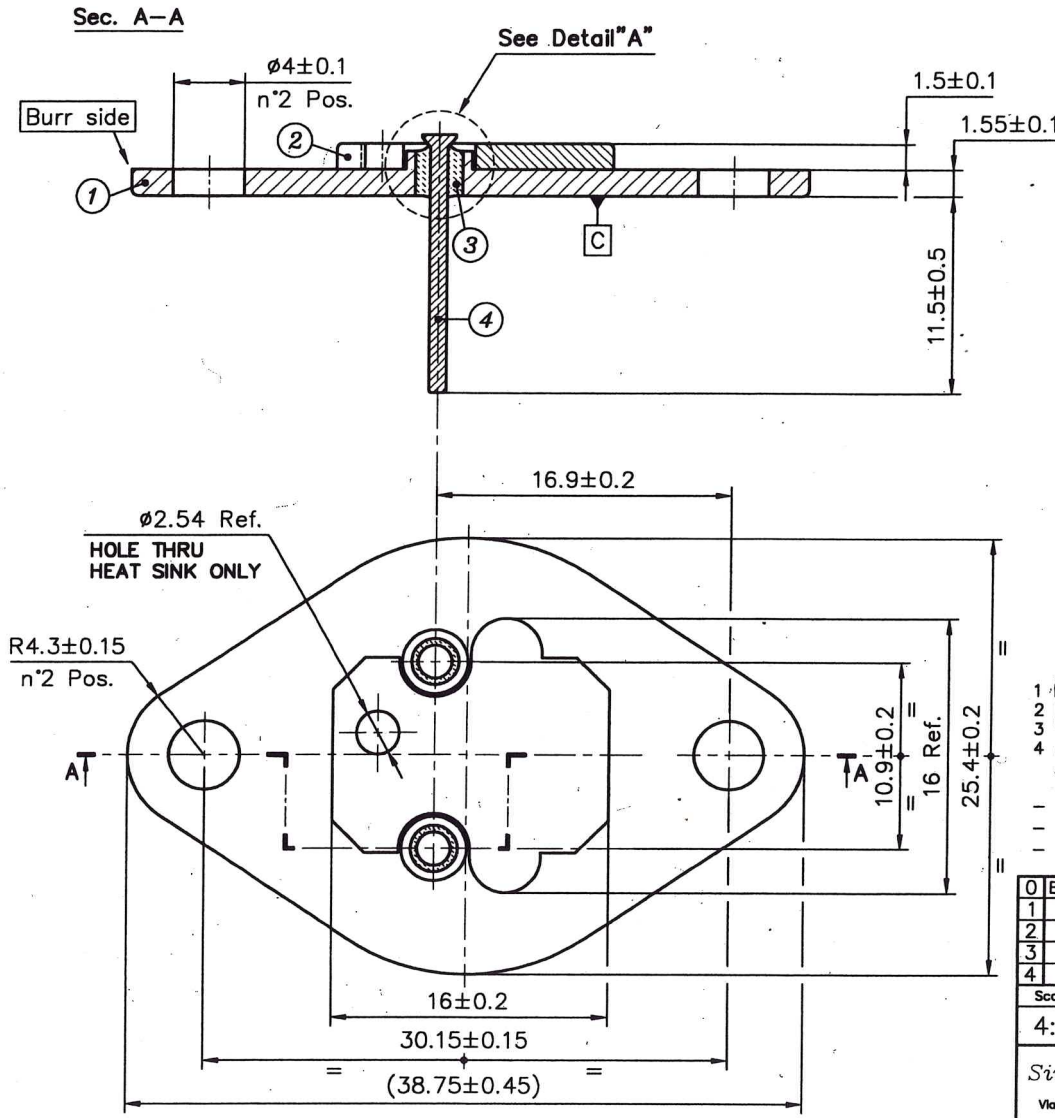
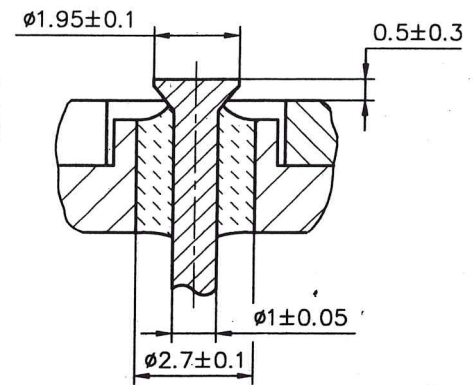


SSM P/N HDR00342

EXTENSION	GLASS COLOR	PLATING
11	Blue	Electroless Nickel 3±6µm



Detail "A"
scale 10:1
n°2 Pos.



Note / Notes

- 1 Flangia: acciaio EN 10139-DC04.
 - 2 Dissipatore di calore: rame EN 1652-Cu-OF.
 - 3 Vetro compresso.
 - 4 Adduttori: DIN 17745-NiFe47 o ASTM F30-Lega 52.
 - 1 Flange: steel EN 10139-DC04.
 - 2 Heat sink: copper EN 1652-Cu-OF.
 - 3 Compression glass seal.
 - 4 Leads: DIN 17745-NiFe47 or ASTM F30-Alloy 52.
- Bavature ammesse 0.1 max.
 - Superficie "C" interna al Ø23.62 deve essere concava 0.04 convessa 0.16.
 - Surface "C" to be flat 0.04 concave to 0.16 convex inside diameter 23.62.
 - Burrs 0.1 max.

0 Emission	21-06-2016	5
1		6
2		7
3		8
4		9

Scale	Designer	Chairman	Material	Edition	Sight (METRIC mm)
4:1	Rossi	Soffientini	See notes	02	A3
Sintermetalglass Srl			General Roughness		
Via Gramsci, 44 - 20090 OPERA (MI)			General tolerances where not specified		
Tel.02-57600376-57601274-57601570			Design N°		
Fax.02-57600924			ISO 2768-mK		
			SMG 100.003		

