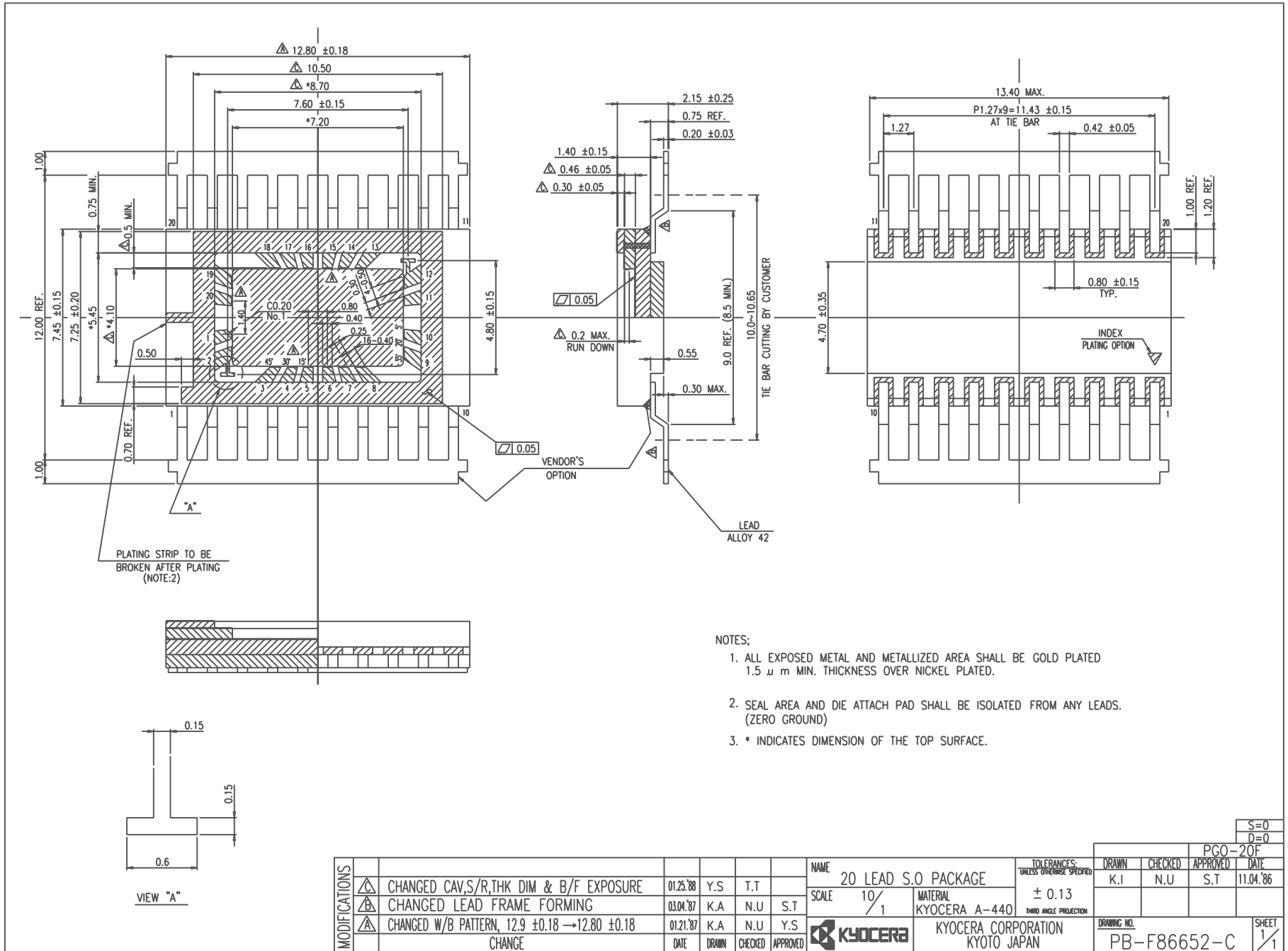


# SSM P/N CSO02003



- NOTES:
- ALL EXPOSED METAL AND METALLIZED AREA SHALL BE GOLD PLATED 1.5 μ m MIN. THICKNESS OVER NICKEL PLATED.
  - SEAL AREA AND DIE ATTACH PAD SHALL BE ISOLATED FROM ANY LEADS. (ZERO GROUND)
  - \* INDICATES DIMENSION OF THE TOP SURFACE.

