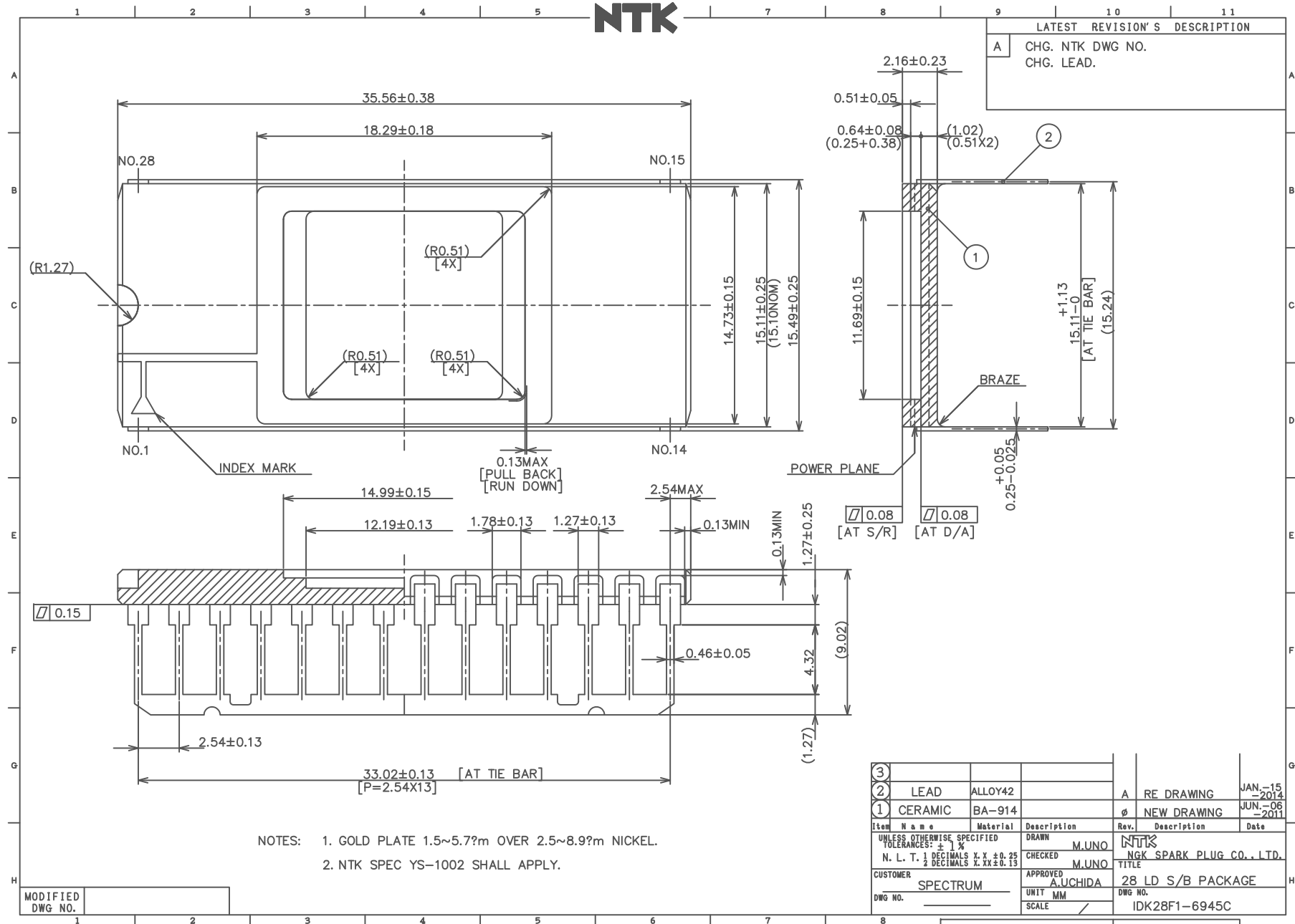


NTK

| LATEST REVISION'S DESCRIPTION | |
|-------------------------------|--------------------------------|
| A | CHG. NTK DWG NO. CHG. LEAD. |



NOTES: 1. GOLD PLATE 1.5~5.7µm OVER 2.5~8.9µm NICKEL.
2. NTK SPEC YS-1002 SHALL APPLY.

| | | | | | |
|------------------------------------|---------|----------|-------------|----------|--------------------------|
| 3 | | | | | |
| 2 | LEAD | ALLOY42 | | A | RE DRAWING |
| 1 | CERAMIC | BA-914 | | Ø | NEW DRAWING |
| Item | Name | Material | Description | Rev. | Description |
| UNLESS OTHERWISE SPECIFIED | | | DRAWN | M.UNO | NTK |
| TOLERANCES: ± 1% | | | CHECKED | M.UNO | NGK SPARK PLUG CO., LTD. |
| N. L. T. 1 DECIMALS X, Y, Z ± 0.25 | | | APPROVED | A.UCHIDA | TITLE |
| 2 DECIMALS X, XX ± 0.13 | | | CUSTOMER | SPECTRUM | 28 LD S/B PACKAGE |
| DWG NO. | | UNIT | MM | DWG NO. | IDK28F1-6945C |
| | | SCALE | | | |

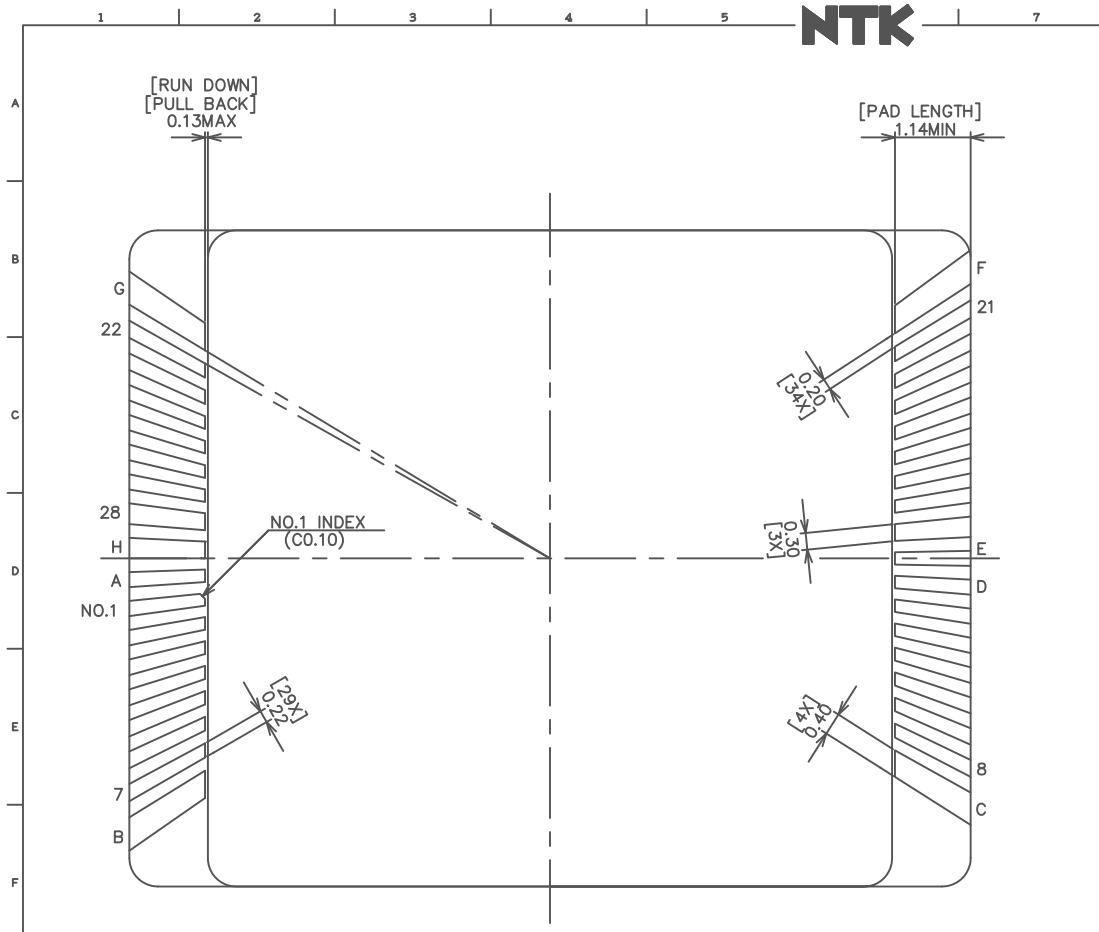
MODIFIED DWG NO. 1

PART NO. SHEET 1 OF 2



NTK

| LATEST REVISION'S DESCRIPTION | |
|-------------------------------|-------------------|
| A | SEE SHEET 1 OF 2. |



CONNECTION TABLE

| PAD | LEAD | PAD | LEAD |
|---------|------|----------------------|------|
| S/R | N/C | B,G,H,14 | 14 |
| A,D,D/A | N/C | 15 | 15 |
| 1 | 1 | 16 | 16 |
| 2 | 2 | 17 | 17 |
| 3 | 3 | 18 | 18 |
| 4 | 4 | 19 | 19 |
| 5 | 5 | 20 | 20 |
| 6 | 6 | 21 | 21 |
| 7 | 7 | 22 | 22 |
| 8 | 8 | 23 | 23 |
| 9 | 9 | 24 | 24 |
| 10 | 10 | 25 | 25 |
| 11 | 11 | 26 | 26 |
| 12 | 12 | 27 | 27 |
| 13 | 13 | C,E,F,28,POWER PLANE | 28 |

B/G PADS DETAIL

MODIFIED
DWG NO.

| | | | |
|--|---------|----------------------|--|
| UNLESS OTHERWISE SPECIFIED TOLERANCES: ± 1% N. L. T. 1 DECIMALS X.X ± 0.25 2 DECIMALS X.XX ± 0.13 | | DRAWN M.UNO | NGK SPARK PLUG CO., LTD. TITLE B/G PADS DETAIL & CONNECTION TABLE DWG NO. IDK28F1-6945C |
| CUSTOMER SPECTRUM | DWG NO. | CHECKED M.UNO | |
| | | APPROVED A.UCHIDA | |
| | | UNIT MM | |
| | | SCALE / | |

| Rev. | Description | Date |
|------|-------------|--------------|
| A | RE DRAWING | JAN.-15-2014 |
| φ | NEW DRAWING | JUN.-06-2011 |

PART NO. SHEET 2 OF 2



