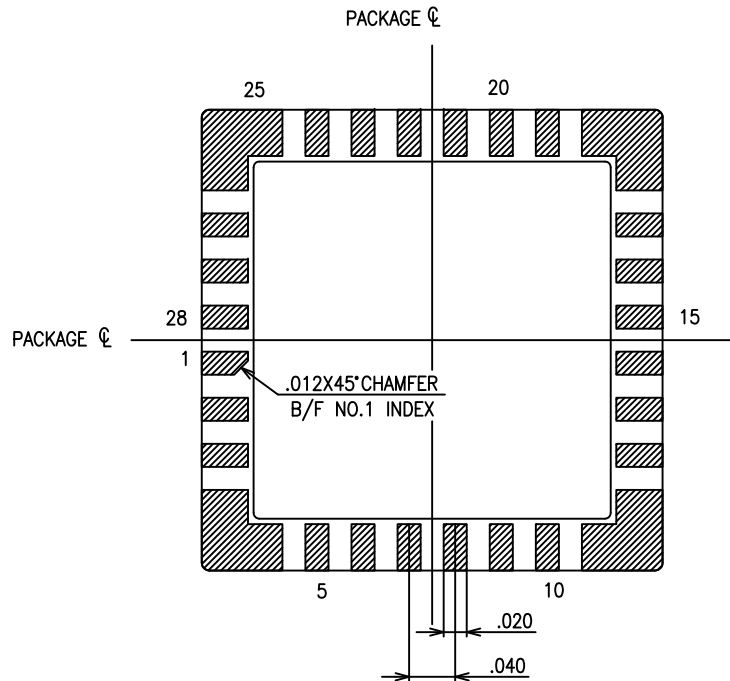


PART NO.	I.D MARK	LEAD TIED DOWN	NOTCH AREA METALLIZED
01	⊗	NIL	WITH METALLIZATION
02	⊕	NO.1 ONLY	WITH METALLIZATION
03	⊙	NO.14 ONLY	WITH METALLIZATION
04	⊘	NIL	WITHOUT METALLIZATION

SB0281385-4	S=0 D=0
SB0281385-3	S=0 D=14
SB0281385-2	S=0 D=1
SB0281385-1	S=0 D=0

MODIFICATION	ADDED: SHEET No.3~12, PART No.4 DELETED: VENDOR'S OPTION CHANGED: LEAD TIE BAR.				APR.13.'11	M.S	K.Y	S.NI	NAME	TOLERANCE	DRAWN	CHECKED	APPROVED	DATE	
		DELETED: SHEET 3/4, 4/4				JUN.14.'99	S.TH	T.HA/S.F	H.SA	28 LEAD SIDE BRAZED PACKAGE	UNLESS OTHERWISE SPECIFIED	M.K	K.M		SEP.11.'78
	ADDED: SHEET 2/4								SCALE 4 / 1	±.005					
	REDRAWN (CONVERTED CAD DATA)				AUG.25.'92	S.SH	S.T/TA	K.M		THIRD ANGLE PROJECTION					
	CHANGED				DATE	DRAWN	CHECKED	APPROVED	KYOCERA		KYOCERA CORPORATION KYOTO JAPAN			DRAWING NO. KD-78385-G	SHEET 1/11



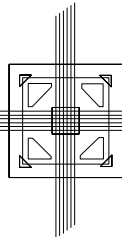


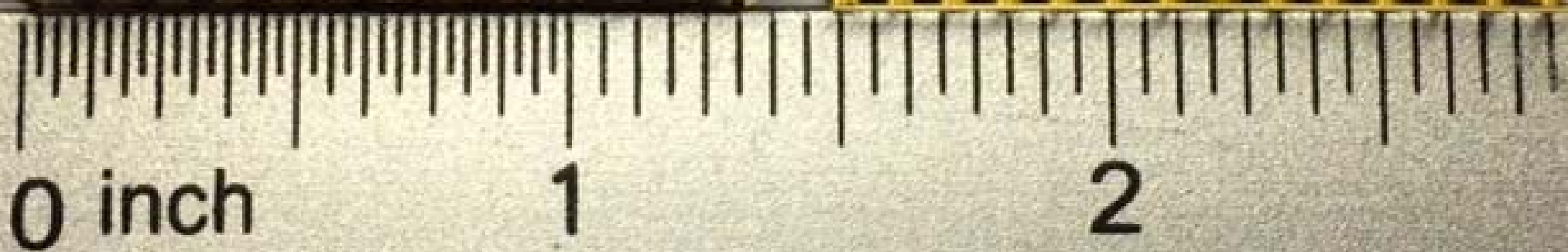
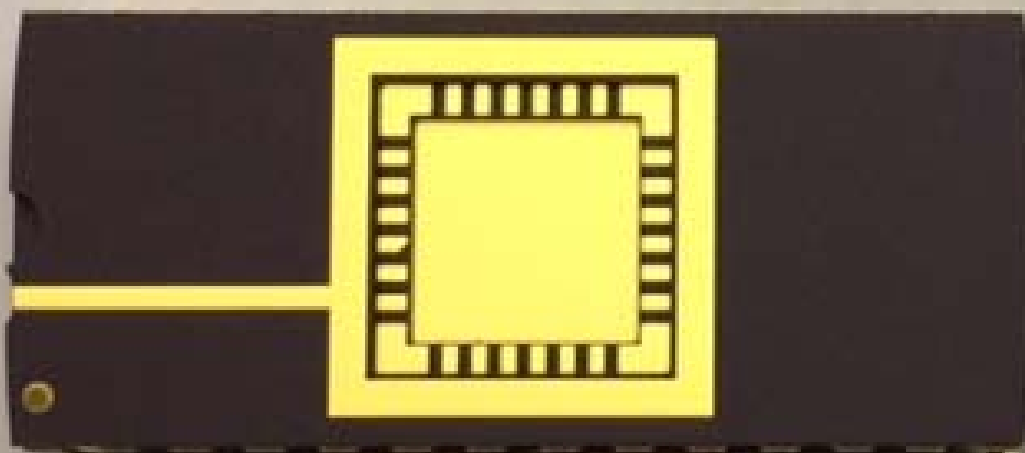
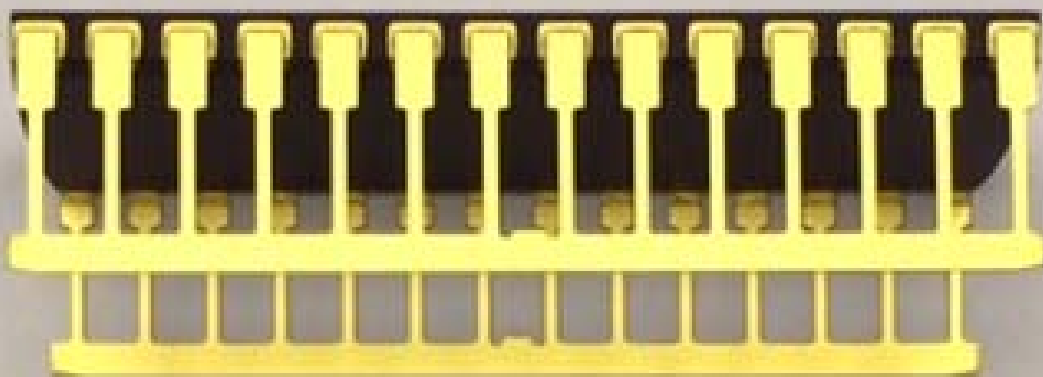
NOTES :

1. PLATING THICKNESS TO BE PER CUSTOMER'S SPECIFICATION.
2. SEAL AREA TO BE METALLIZED.
3. DIE ATTACH AREA TO BE METALLIZED.
4. LEAD RESISTANCE : 0.35 OHM MAX.

BONDING PATTERN

MODIFICATION						NAME 28 LEAD SIDE BRAZED PACKAGE	TOLERANCE UNLESS OTHERWISE SPECIFIED	DRAWN S.SH	CHECKED S.T/T.A	APPROVED K.M	DATE AUG.25.'92
						SCALE 10/1	MATERIAL				
	△ ADDED: THIS SHEET	AUG.25.'92	S.SH	S.T/T.A	K.M	KYOCERA	KYOCERA CORPORATION KYOTO JAPAN	DRAWING NO. KD-78385-G			SHEET 2/11
	CHANGED	DATE	DRAWN	CHECKED	APPROVED						





0 inch

1

2