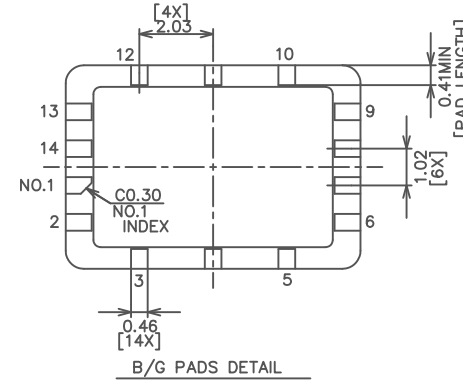
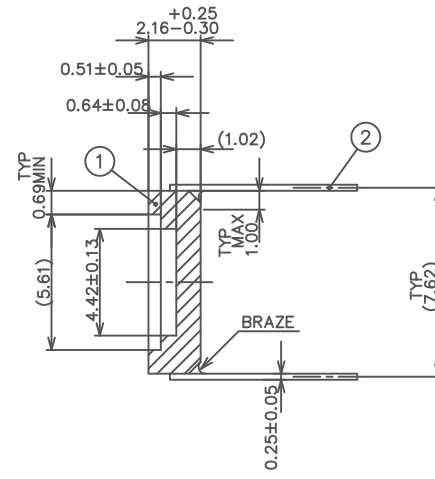
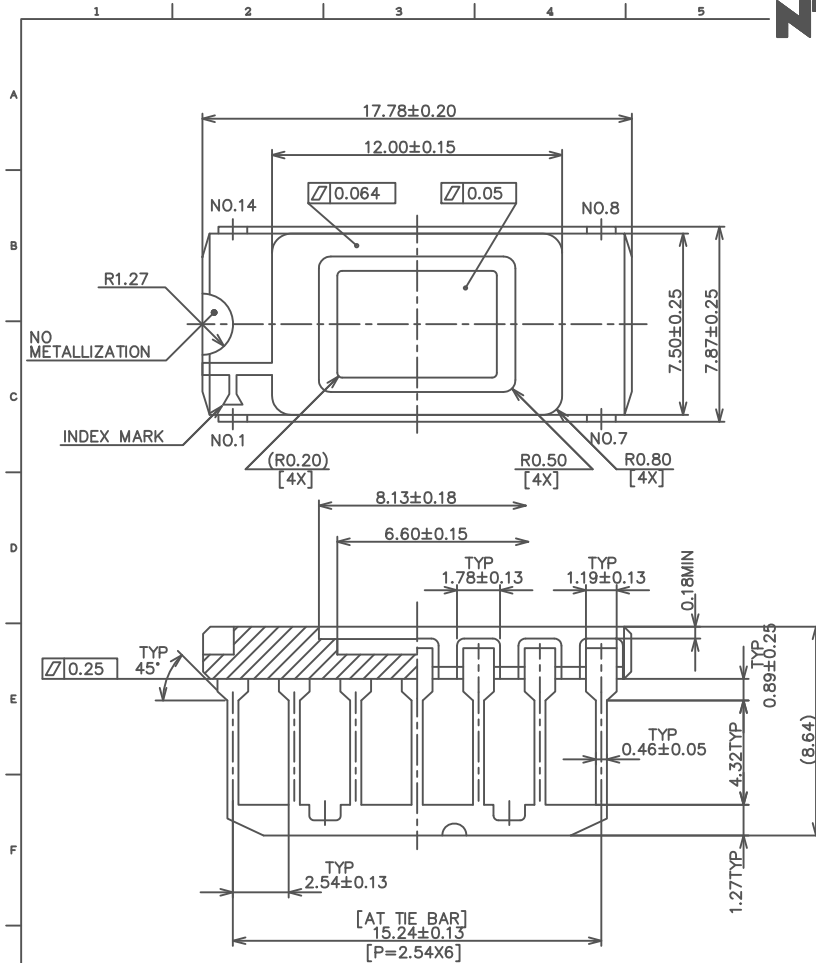


NTK



9	10	11
LATEST REVISION'S		DESCRIPTION

- NOTES; 1. GOLD PLATE 1.5?m MIN OVER 2.0?m MIN NICKEL
 2. PLATING TIE BAR TO BE BROKEN AFTER PACKAGE PLATING AT CERAMIC END.
 3. NO LEAD ELECTRICALLY CONNECTED TO THE DIE ATTACH PAD. SEAL RING ISOLATED.
 4. NTK SPECIFICATION YS-1002 SHALL APPLY.

Item	Name	Material	Description	Rev.	Description	Date
3	LEAD	ALLOY42				
2	CERAMIC	BLACK ALUMINA				
UNLESS OTHERWISE SPECIFIED TOLERANCES: ± 1 % N. L. T. 1 DECIMALS X.X ± 0.25 2 DECIMALS X.XX ± 0.13			DRAWN K. AKITA	NTK		
CUSTOMER SPECTRUM			CHECKED		NTK SPARK PLUG CO., LTD.	
APPROVED H. KONDO					TITLE	
DWG NO.			UNIT MM		14 LEAD S/B PKG	
			SCALE /		DWG NO. IDK14F1-134T	

MODIFIED
DWG NO.

PART NO. SHEET 1 OF 1



