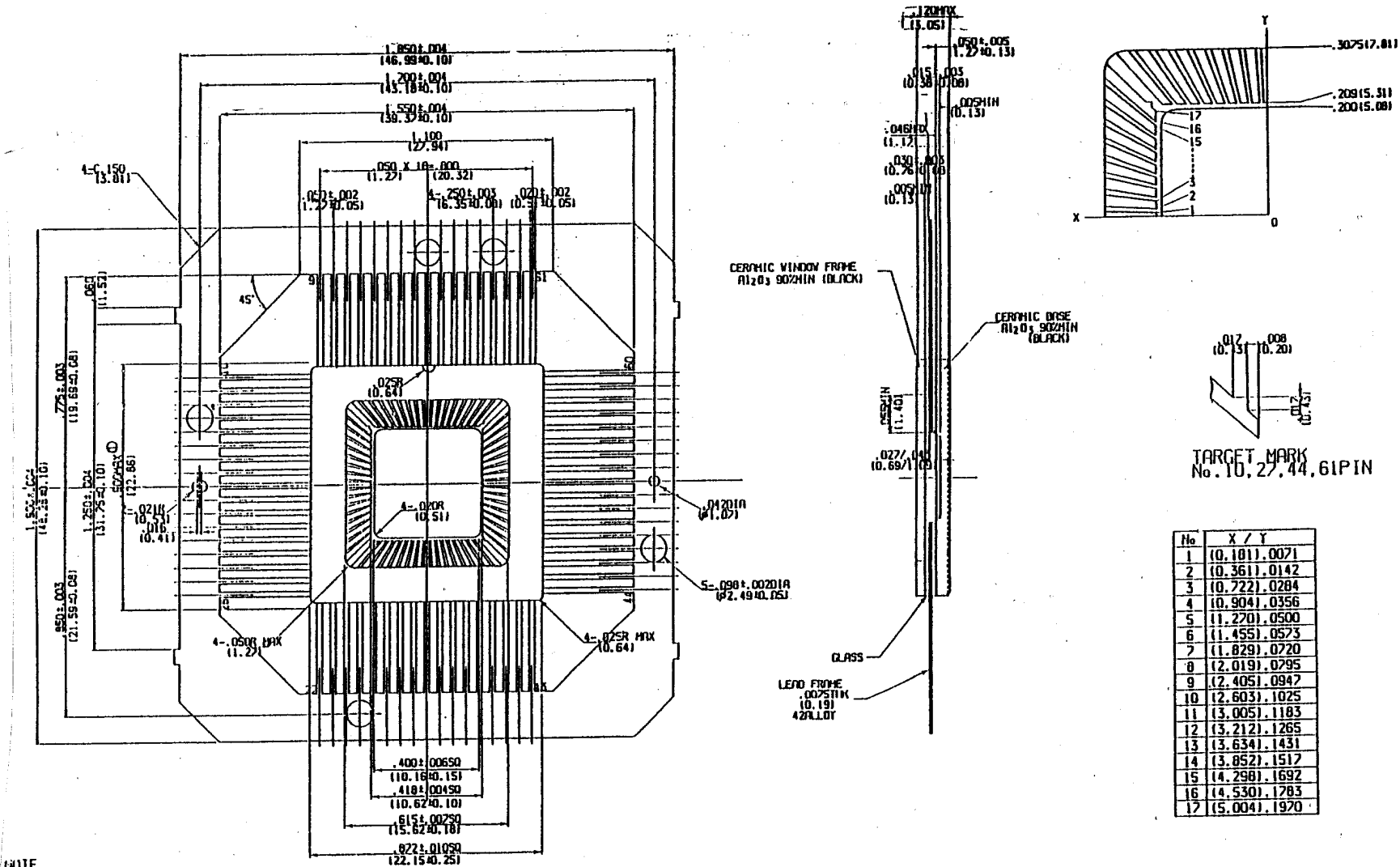


# SSM P/N CQF06803



TARGET MARK  
No. 10, 27, 44, 61PIN

| No | X / Y         |
|----|---------------|
| 1  | (0.181), 0071 |
| 2  | (0.361), 0142 |
| 3  | (0.722), 0284 |
| 4  | (0.904), 0356 |
| 5  | (1.270), 0500 |
| 6  | (1.455), 0573 |
| 7  | (1.829), 0720 |
| 8  | (2.019), 0795 |
| 9  | (2.405), 0947 |
| 10 | (2.603), 1025 |
| 11 | (3.005), 1183 |
| 12 | (3.212), 1265 |
| 13 | (3.634), 1431 |
| 14 | (3.852), 1517 |
| 15 | (4.298), 1692 |
| 16 | (4.550), 1783 |
| 17 | (5.004), 1970 |

NOTE  
1. MAXIMUM CERAMIC AND GLASS FLOW ON LEADS REFERENCED FROM LEADFRAME CENTERLINE.  
2. TARGET MARK WITH No. 10, 27, 44, 61PIN

|   |  |                 |
|---|--|-----------------|
| NAME<br>68LD QUAD K-PACK(400)                           | TOLERANCES<br>UNLESS OTHERWISE SPECIFIED | BY SAN<br>C/SEK |
| SCALE   | MATERIAL                                 | APPROVED        |
| <input checked="" type="checkbox"/> KYOCERA CORPORATION | KYOTO JAPAN                              | DATE OCT 19     |

