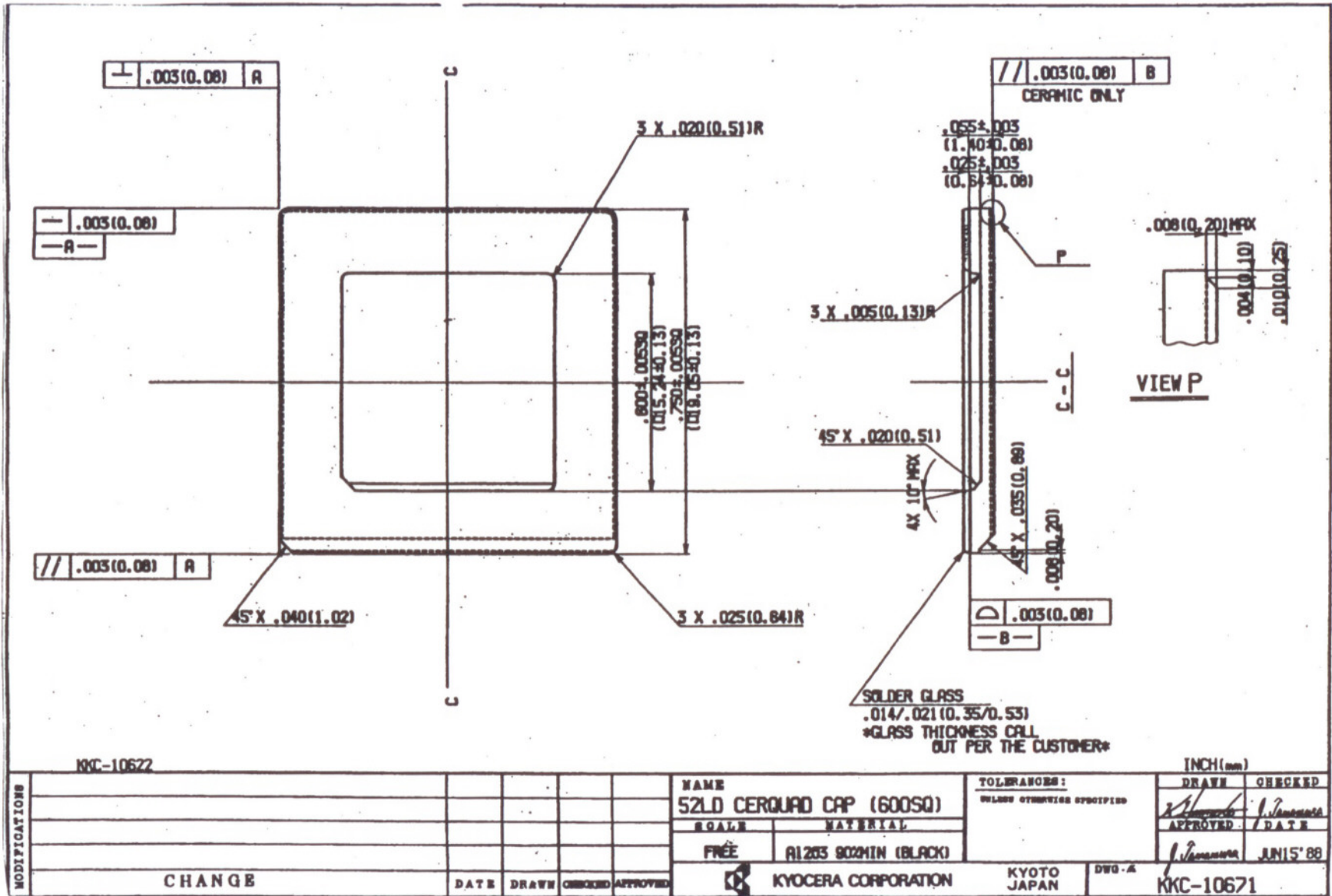


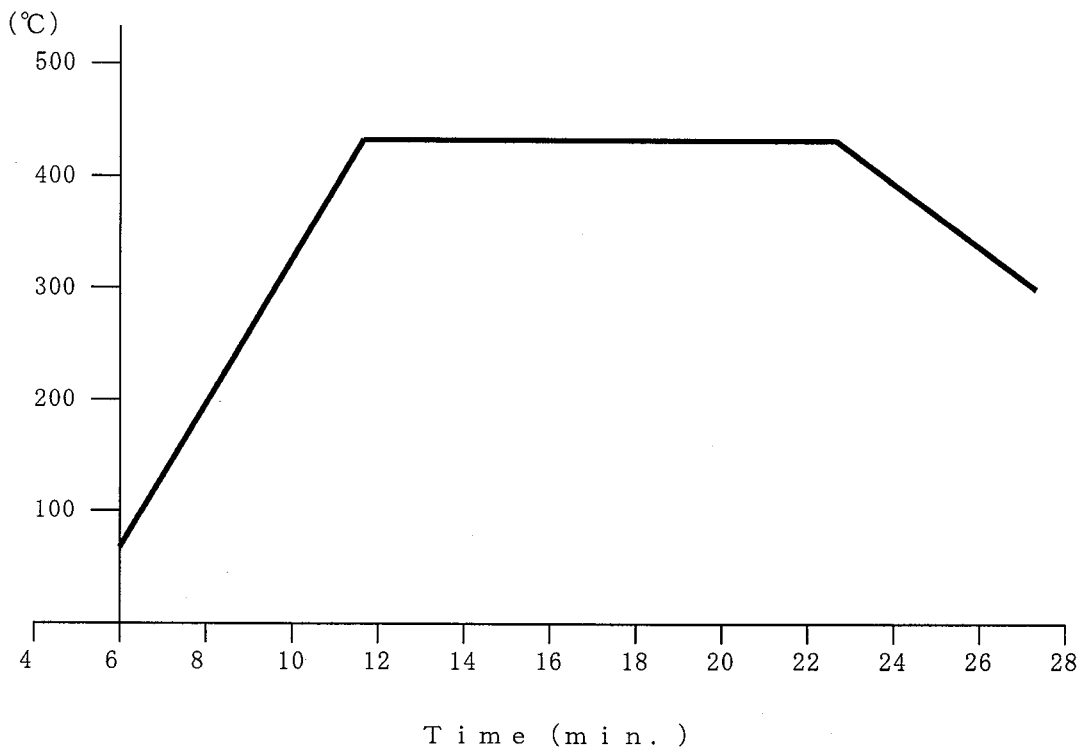
CQC05204



www.spectrum-semi.com Phone: 408-435-5555 Fax: 408-435-8226

# KC-800 DATA SHEET

## 1. TYPICAL SEALING PROFILE



Temperature Rise	40-110°C/min.
Peak Temperature	440°C
Holding Time at 430°C	10 min. MIN.
Cooling Rate	20-40°C/min.

## 2. CHARACTERISTICS

TRANSITION POINT (°C)	313°C
SOFTENING POINT (°C)	350°C
THERMAL EXPANSION COEFFICIENT 30-250°C (*10 <sup>-6</sup> /°C)	6.5
DIELECTRIC CONSTANT (1MHz 25°C)	12.5
DENSITY (g/cm <sup>3</sup> )	5.7
VOLUME RESISTIVITY 250°C log (Ω-cm)	9.8
ALPHA EMISSION (COUNT/cm <sup>2</sup> ·hr)	<0.5
ACID DURABILITY (WEIGHT LOSS)	
1N HCl 25°C, 5min	0.8
18N H <sub>2</sub> SO <sub>4</sub> 50°C, 5min	0.3