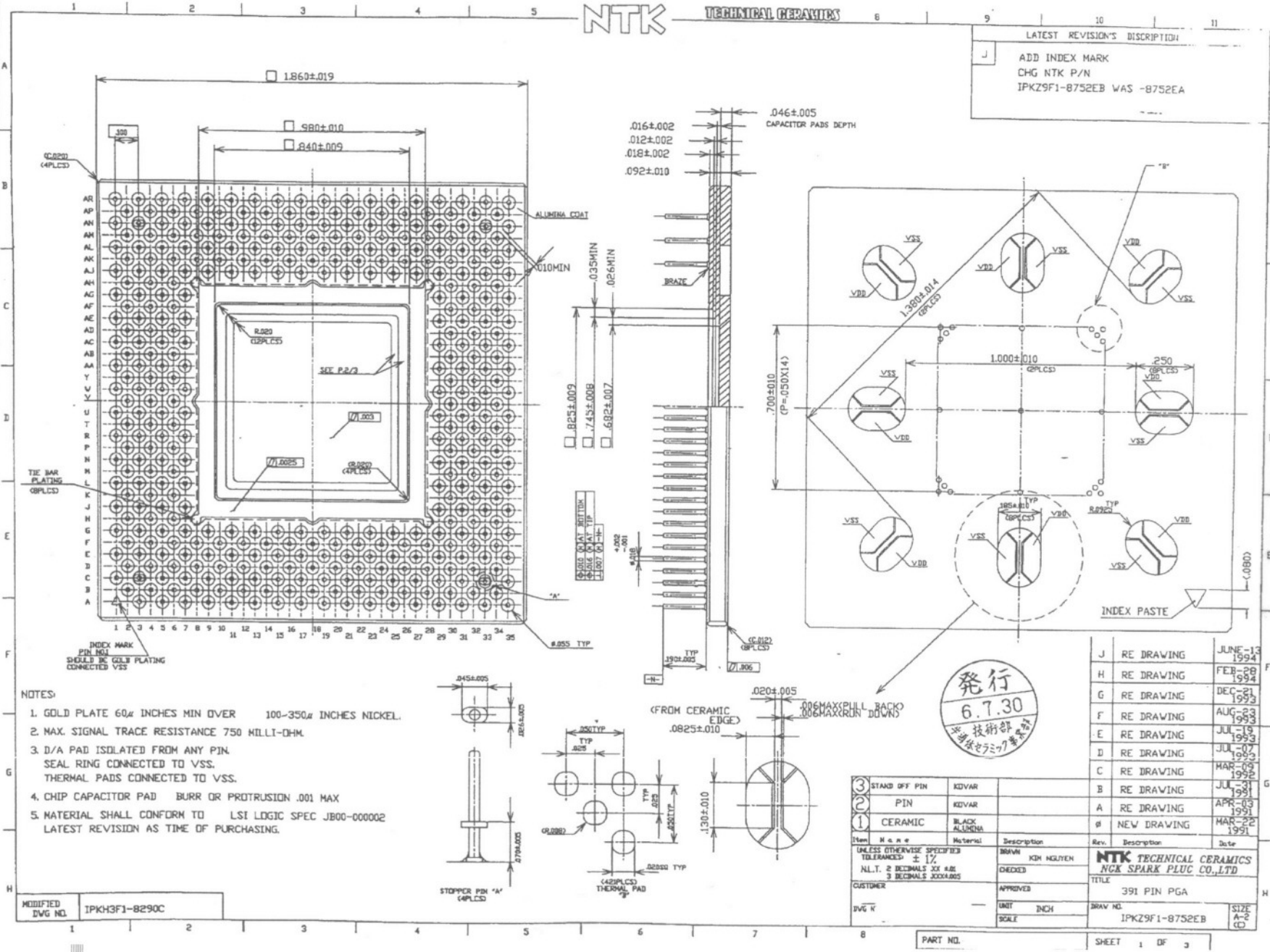


SSM P/N CPG39104

NTK TECHNICAL CERAMICS



LATEST REVISION'S DISCUSSION
 J ADD INDEX MARK
 CHG NTK P/N
 IPKZ9F1-B752EB WAS -B752EA

- NOTES:
1. GOLD PLATE 60μ INCHES MIN OVER 100-350μ INCHES NICKEL.
 2. MAX. SIGNAL TRACE RESISTANCE 750 MILLI-OHM.
 3. D/A PAD ISOLATED FROM ANY PIN SEAL RING CONNECTED TO VSS. THERMAL PADS CONNECTED TO VSS.
 4. CHIP CAPACITOR PAD BURR OR PROTRUSION .001 MAX
 5. MATERIAL SHALL CONFORM TO LSI LOGIC SPEC JB00-000002 LATEST REVISION AS TIME OF PURCHASING.

Item	Name	Material	Description	Rev.	Description	Date
3	STAND OFF PIN	KDVAR				
2	PIN	KDVAR				
1	CERAMIC	BLACK ALUMINA				
UNLESS OTHERWISE SPECIFIED TOLERANCES: ± 1% N.L.T. & DECIMALS XX 4.8E & DECIMALS XXXX4.8AS						
CUSTOMER			APPROVED	DATE		
DRAWING NO.			391 PIN PGA		DATE	
SCALE			UNIT INCH		DRAW NO.	
			IPKZ9F1-B752EB		SIZE A-2 CD	

Letter	Description	Date
J	RE DRAWING	JUN-13 1994
H	RE DRAWING	FEB-28 1994
G	RE DRAWING	DEC-21 1993
F	RE DRAWING	AUG-23 1993
E	RE DRAWING	JUL-19 1993
D	RE DRAWING	JUL-07 1993
C	RE DRAWING	MAR-09 1992
B	RE DRAWING	JUL-1991
A	RE DRAWING	APR-03 1991
φ	NEW DRAWING	MAR-22 1991

MODIFIED DWG NO. IPKH3F1-8290C

PART NO. SHEET 1 OF 3



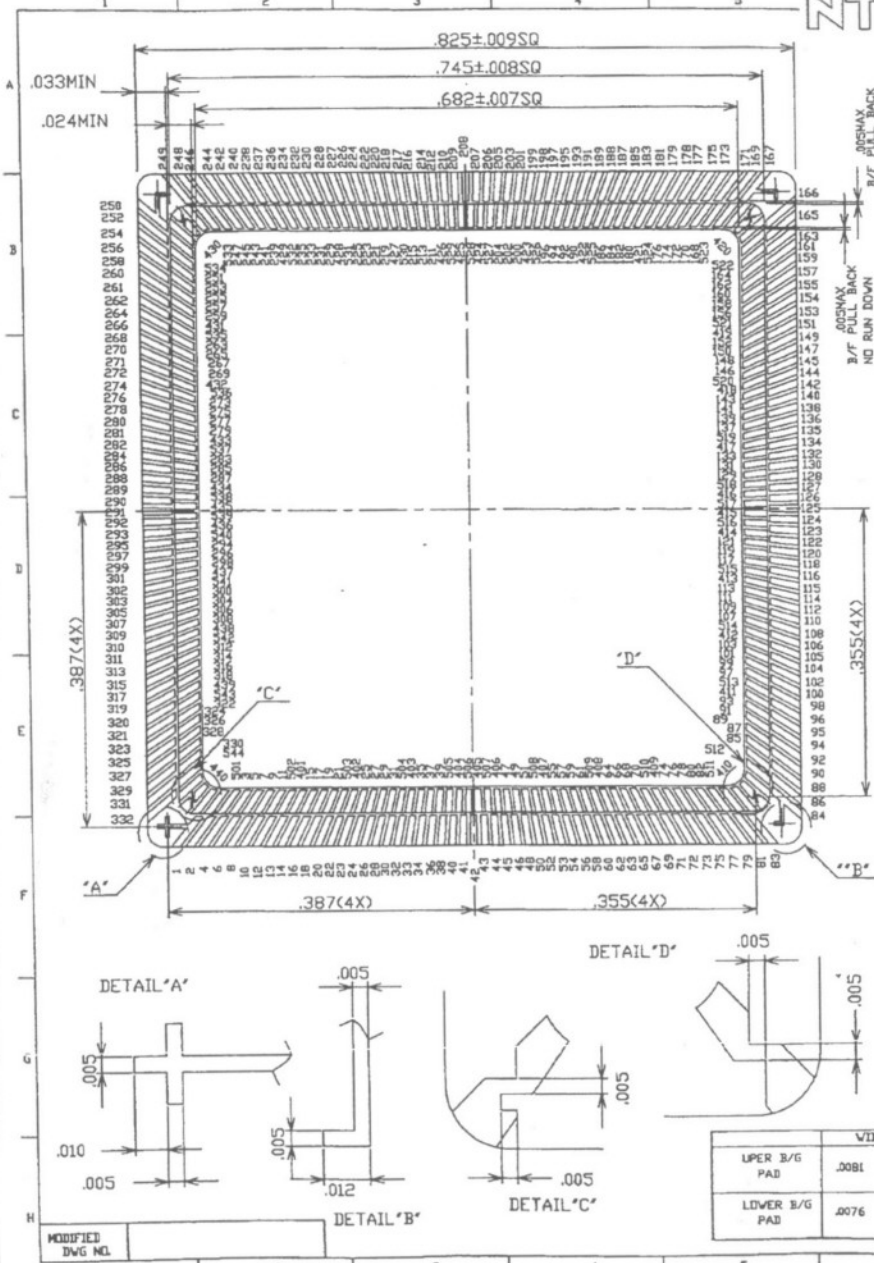
SSM P/N CPG39104

NTK

TECHNICAL CERAMICS

LATEST REVISION'S DESCRIPTION

G CHK NTK P/N
IPKZ9F1-8752EB WAS -8752EA



UPPER B/F PAD

B/F ANG	B/F CTR	START	END	B/F NUMBER
0.000	0.0000	-0.0040	0.0040	42 --- 125 --- 208 --- 291 ---
1.714	0.0126	0.0086	0.0166	41, 43, 124, 126, 207, 209, 290, 292
3.428	0.0252	0.0212	0.0292	40, 44, 123, 127, 206, 210, 289, 293
5.139	0.0378	0.0337	0.0419	38, 45, 122, 128, 205, 212, 288, 295
6.847	0.0505	0.0464	0.0546	36, 46, 120, 130, 203, 214, 286, 297
8.549	0.0632	0.0591	0.0673	34, 48, 118, 132, 201, 216, 284, 299
10.244	0.0760	0.0719	0.0801	33, 50, 116, 134, 199, 217, 282, 301
11.931	0.0888	0.0847	0.0929	32, 52, 115, 135, 198, 218, 281, 302
13.698	0.1017	0.0975	0.1059	30, 53, 114, 136, 197, 220, 280, 303
15.274	0.1148	0.1106	0.1190	28, 54, 112, 138, 195, 222, 278, 305
16.928	0.1279	0.1237	0.1321	26, 56, 110, 140, 193, 224, 276, 307
18.566	0.1412	0.1369	0.1455	24, 58, 108, 142, 191, 226, 274, 309
20.193	0.1546	0.1503	0.1589	23, 60, 106, 144, 189, 227, 272, 310
21.802	0.1681	0.1638	0.1724	22, 62, 105, 145, 188, 228, 271, 311
23.394	0.1818	0.1774	0.1862	20, 63, 104, 147, 187, 230, 270, 313
24.968	0.1957	0.1912	0.2002	18, 65, 102, 149, 185, 232, 268, 315
26.522	0.2098	0.2053	0.2143	16, 67, 100, 151, 183, 234, 266, 317
28.056	0.2240	0.2194	0.2286	14, 69, 98, 153, 181, 236, 264, 319
29.569	0.2385	0.2339	0.2431	13, 71, 96, 154, 179, 237, 262, 320
31.060	0.2531	0.2484	0.2578	12, 72, 95, 155, 178, 238, 261, 321
32.529	0.2681	0.2633	0.2729	10, 73, 94, 157, 177, 240, 260, 323
33.975	0.2832	0.2783	0.2881	8, 75, 92, 159, 175, 242, 258, 325
35.397	0.2987	0.2937	0.3037	6, 77, 90, 161, 173, 244, 256, 327
36.795	0.3144	0.3094	0.3194	4, 79, 88, 163, 171, 246, 254, 329
38.168	0.3304	0.3253	0.3355	2, 81, 86, 165, 169, 248, 252, 331
39.516	0.3467	0.3415	0.3519	1, 83, 84, 166, 167, 249, 250, 332

LOWER B/F PAD

B/F ANG	B/F CTR	START	END	B/F NUMBER
0.857	0.0058	0.0020	0.0096	506, 405, 415, 517, 528, 425, 435, 539
2.571	0.0175	0.0137	0.0213	404, 507, 516, 416, 424, 529, 538, 436
4.283	0.0291	0.0253	0.0329	505, 406, 414, 518, 527, 426, 434, 540
5.992	0.0408	0.0370	0.0446	39, 47, 121, 129, 204, 211, 287, 294
7.697	0.0525	0.0486	0.0564	37, 49, 119, 131, 202, 213, 285, 296
9.396	0.0643	0.0604	0.0682	35, 51, 117, 133, 200, 215, 283, 298
11.087	0.0762	0.0723	0.0801	403, 508, 515, 417, 423, 530, 537, 437
12.769	0.0881	0.0842	0.0920	504, 407, 413, 519, 526, 427, 433, 541
14.441	0.1001	0.0962	0.1040	31, 53, 113, 137, 196, 219, 279, 300
16.101	0.1122	0.1082	0.1162	29, 57, 111, 139, 194, 221, 277, 304
17.748	0.1244	0.1204	0.1284	27, 59, 109, 141, 192, 223, 275, 306
19.381	0.1368	0.1328	0.1408	25, 61, 107, 143, 190, 225, 273, 308
20.998	0.1492	0.1451	0.1533	402, 509, 514, 418, 422, 531, 536, 438
22.598	0.1618	0.1577	0.1659	503, 408, 412, 520, 525, 428, 432, 542
24.181	0.1746	0.1704	0.1788	21, 64, 103, 146, 186, 229, 269, 312
25.745	0.1875	0.1833	0.1917	19, 66, 101, 148, 184, 231, 267, 314
27.289	0.2006	0.1963	0.2049	17, 68, 99, 150, 182, 233, 265, 316
28.812	0.2139	0.2095	0.2183	15, 70, 97, 152, 180, 235, 263, 318
30.314	0.2273	0.2229	0.2317	401, 510, 513, 419, 421, 532, 535, 439
31.794	0.2410	0.2365	0.2455	502, 409, 411, 521, 524, 429, 431, 543
33.251	0.2549	0.2503	0.2595	11, 74, 93, 156, 176, 239, 259, 322
34.685	0.2691	0.2645	0.2737	9, 76, 91, 158, 174, 241, 257, 324
36.095	0.2835	0.2788	0.2882	7, 78, 89, 160, 172, 243, 255, 326
37.480	0.2981	0.2933	0.3029	3, 80, 87, 162, 170, 245, 253, 328
38.840	0.3131	0.3082	0.3180	3, 82, 85, 164, 168, 247, 251, 330
40.175	0.3283	0.3233	0.3333	501, 511, 512, 522, 523, 533, 534, 544
41.485	0.3438	0.3387	0.3489	440 --- 410 --- 420 --- 430 ---

発行
6.7.30
技術部
半導体セラミックス部

Rev.	Description	Date
G	RE DRAWING	JUNE-14 -1994
F	RE DRAWING	FEB-28 -1994
E	RE DRAWING	DEC-21 -1993
D	RE DRAWING	JUL-07 1993
C	RE DRAWING	MAR-09 1991
B	RE DRAWING	JUL-31 1991
A	RE DRAWING	APR-03 1991
9	NEW DRAWING	MAR-22 1991

UNLESS OTHERWISE SPECIFIED TOLERANCES ± 17. N.L.T. 2 DECIMALS AS A.B.I 3 DECIMALS JOGULARS	DRAWN KIM NGUYEN	NTK TECHNICAL CERAMICS NGK SPARK PLUG CO., LTD
CUSTOMER DVG N	CHECKED	
TITLE BONDING PAD DETAIL		DRAW NO. 8752EB IPKZ9F1-8752EB
SCALE INCH		
PART NO.		SHEET 2 OF 3



SSM P/N CPG39104

NTK

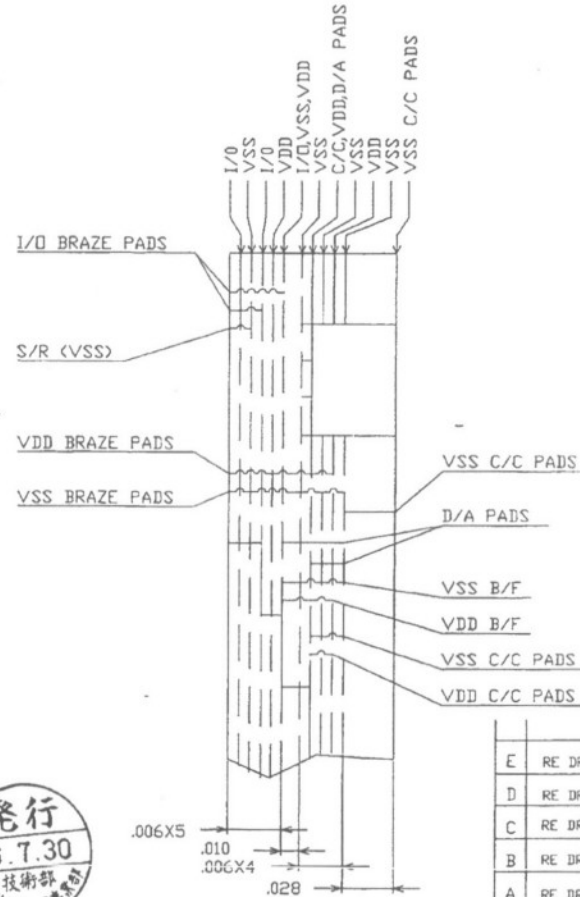
INTERNATIONAL (HONG KONG) LIMITED

LATEST REVISION'S DESCRIPTION

E CHG. NTK DWG NO.
IPKZ9F1-8752EB WAS -8752EA

B/F	PIN	B/F	PIN	B/F	PIN	B/F	PIN	B/F	PIN	B/F	PIN	B/F	PIN	B/F	PIN	B/F	VDD	B/F	VSS
1	F6	47	D18	93	K30	139	AA29	185	AN25	231	AK12	277	AA7	323	E3	A5	A5	A3	
2	B2	48	D20	94	E33	140	AF34	186	AJ23	232	AN11	278	AB4	324	J5	A9	A9	A7	
3	E7	49	G19	95	H32	141	AB30	187	AP28	233	AL11	279	AA5	325	F4	A13	A13	A11	
4	D4	50	B22	96	F34	142	AC33	188	AM24	234	AN7	280	AD2	326	J7	A21	A21	A15	
5	F8	51	F20	97	L29	143	AC31	189	AN27	235	AJ11	281	AA3	327	D2	A25	A25	A23	
6	B4	52	C21	98	K32	144	AG33	190	AL23	236	AM10	282	AB2	328	H6	A29	A29	A27	
7	G9	53	B24	99	L31	145	AD32	191	AN23	237	AP6	283	Y6	329	E5	A33	A33	A31	
8	D6	54	D22	100	G33	146	AC29	192	AK22	238	AM8	284	Y4	330	G5	C35	C35	A35	
9	E9	55	E21	101	H30	147	AH34	193	AP26	239	AK10	285	V7	331	C3	G35	G35	E35	
10	C5	56	B26	102	L33	148	AD30	194	AJ21	240	AN5	286	Y2	332	G7	L35	L35	J35	
11	F10	57	G21	103	N29	149	AE33	195	AM22	241	AL9	287	V6			R35	R35	N35	
12	D8	58	C23	104	H34	150	AE31	196	AL21	242	AM6	288	V5			AC35	AC35	AA35	
13	B6	59	F22	105	M32	151	AJ33	197	AP24	243	AJ9	289	V1			AG35	AG35	AE35	
14	D10	60	C27	106	J33	152	AE29	198	AN21	244	AP4	290	V3			AL35	AL35	AJ35	
15	G11	61	E23	107	N31	153	AF32	199	AP22	245	AK8	291	V2			AR35	AR35	AN35	
16	C7	62	D24	108	N33	154	AK34	200	AK20	246	AL5	292	U3			AR31	AR31	AR33	
17	E11	63	B28	109	P30	155	AH32	201	AM20	247	AL7	293	U1			AR27	AR27	AR29	
18	C11	64	G23	110	K34	156	AF30	202	AJ19	248	AN3	294	V4			AR23	AR23	AR25	
19	F12	65	C25	111	R29	157	AL33	203	AP20	249	AJ7	295	U5			AR15	AR15	AR21	
20	B8	66	F24	112	P32	158	AG31	204	AK18	250	AK6	296	U7			AR11	AR11	AR13	
21	G13	67	C29	113	R31	159	AK32	205	AL19	251	AJ5	297	T2			AR7	AR7	AR9	
22	D12	68	E25	114	H34	160	AG29	206	AR19	252	AP2	298	T6			AR3	AR3	AR5	
23	C9	69	D26	115	R33	161	AM34	207	AN19	253	AH6	299	T4			AN1	AN1	AR1	
24	C13	70	G25	116	P34	162	AH30	208	AP18	254	AM4	300	R5			AJ1	AJ1	AL1	
25	E13	71	B30	117	T30	163	AL31	209	AN17	255	AG7	301	P2			AE1	AE1	AG1	
26	B10	72	D28	118	T32	164	AJ31	210	AR17	256	AM2	302	R3			AA1	AA1	AC1	
27	F14	73	C31	119	U29	165	AN33	211	AM18	257	AG5	303	M2			NI	NI	RI	
28	D14	74	F26	120	T34	166	AJ29	212	AL17	258	AK4	304	R7			J1	J1	L1	
29	G15	75	D30	121	V30	167	AK30	213	AJ17	259	AF6	305	P4			G1	G1	G1	
30	B12	76	E27	122	U31	168	AL29	214	AP16	260	AL3	306	P6			E1	E1	CI	
31	E15	77	B32	123	U35	169	AP34	215	AK16	261	AH4	307	K2						
32	C15	78	G27	124	U33	170	AK28	216	AM16	262	AK2	308	N5						
33	B14	79	F31	125	V34	171	AM32	217	AP14	263	AE7	309	N3						
34	D16	80	F28	126	W33	172	AJ27	218	AN15	264	AF4	310	J3						
35	F16	81	C33	127	V35	173	AP32	219	AL15	265	AE5	311	M4						
36	B16	82	E29	128	W31	174	AL27	220	AP12	266	AJ3	312	N7						
37	G17	83	G29	129	V32	175	AM30	221	AJ15	267	AD6	313	H2						
38	E17	84	F30	130	Y34	176	AK26	222	AM14	268	AE3	314	M6						
39	F18	85	G31	131	W29	177	AN31	223	AK14	269	AC7	315	L3						
40	A17	86	B34	132	Y32	178	AM28	224	AP10	270	AH2	316	L5						
41	C17	87	H30	133	Y30	179	AP30	225	AL13	271	AD4	317	G3						
42	B18	88	D32	134	AB34	180	AJ25	226	AM13	272	AG3	318	L7						
43	C19	89	J29	135	AA33	181	AM26	227	AN9	273	AC5	319	K4						
44	A19	90	D34	136	AD34	182	AL25	228	AM2	274	AC3	320	F2						
45	E19	91	J31	137	AA31	183	AN29	229	AJ13	275	AB6	321	H4						
46	B20	92	F32	138	AB32	184	AK24	230	AP8	276	AF2	322	X6						

N.O.	VDD	N.O.	VSS
401	A5	501	A3
	A9		A7
	A13		A11
	A21		A15
	A25		A23
	A29		A27
	A33		A31
	C35		A35
	G35		E35
440	L35	544	J35
	R35		N35
	AC35		AA35
	AG35		AE35
	AL35		AJ35
	AR35		AN35
	AR31		AR33
	AR27		AR29
	AR23		AR25
	AR15		AR21
	AR11		AR13
	AR7		AR9
	AR3		AR5
	AN1		AR1
	AJ1		AL1
	AE1		AG1
	AA1		AC1
	NI		RI
	J1		L1
	G1		G1
	E1		CI



(CON. STRUCTURE)

UNLESS OTHERWISE SPECIFIED TOLERANCES: ± 1%	BRAW CHECKED KIM NGUYEN	NTK TECHNICAL CERAMICS NCK SPARK PLUG CO., LTD
N.L.T. 2 DECIMALS XX 4.0 3 DECIMALS XXXXXXS	APPROVED	
CUSTOMER	UNIT INCH	TITLE CONNECTION TABLE 391 PIN PGA
SCALE	BRAW NO. IPKZ9F1-8752EB	SIZE A-2 (C)

Rev.	Description	Date
E	RE DRAWING	JUNE-14-1994
D	RE DRAWING	DEC-21-1993
C	RE DRAWING	JUL-07-1993
B	RE DRAWING	MAR-09-1992
A	RE DRAWING	JUL-32-1991
Ø	NEW DRAWING	MAR-25-1991

MODIFIED DWG NO.

PART NO. SHEET 3 OF 3

