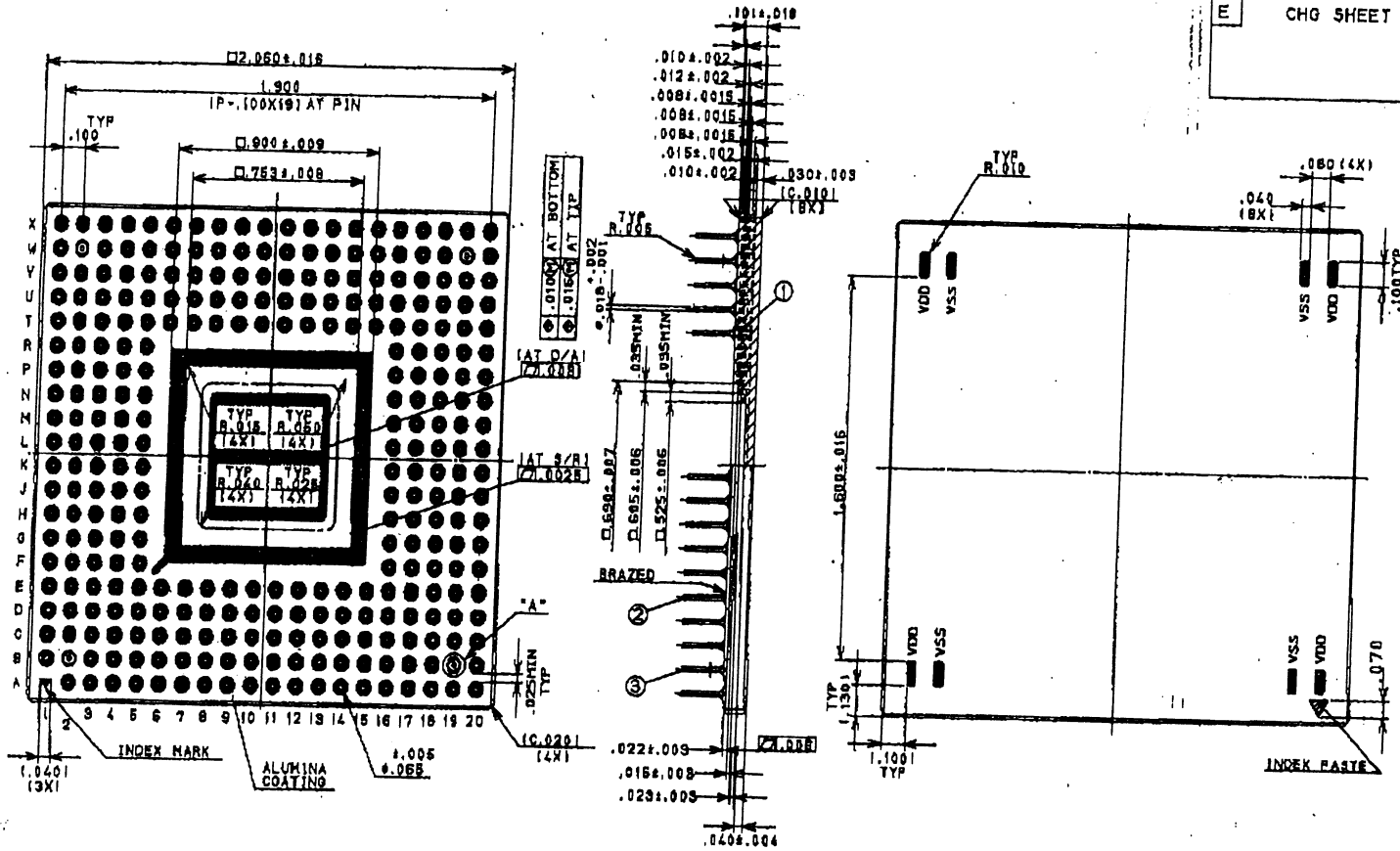
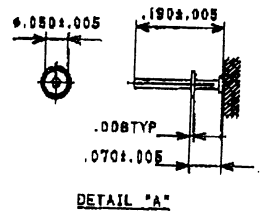


SSM P/N CPG29902

LATEST REVISION & DESCRIPTION	
E	CHG SHEET 2/3



<FAX 2071>
2/4



- NOTES: 1. SCREENED METALLIZATION RESISTANCE : 100mΩ/□
 2. LEAD RESISTANCE (NEAREST PIN TO PAD)
 VDD4, 8, 12, 16, VSS1-12 ---75mΩ MAX.
 VDD1-3, 5-7, 9-11, 13-15 ---200mΩ MAX.
 ALL OTHERS ---1000mΩ MAX.

4. ALL VIAS TO BE SOLID SUCH THAT VOIDING IN VIA WILL NOT REDUCE THE VIA CROSS SECTION BY GREATER THAN 20% OF VIA DIAMETER, 10/75 VIAS BY LTPO)
 5. D/A PAD TO BE ELECTRICALLY NO CONNECTION, S/R ISOLATED.
 6. GOLD PLATE 50μ INCHES MIN OVER 100μ INCHES MIN NICKEL.

MODIFIED DRG NO. TPKY9F1-8709A

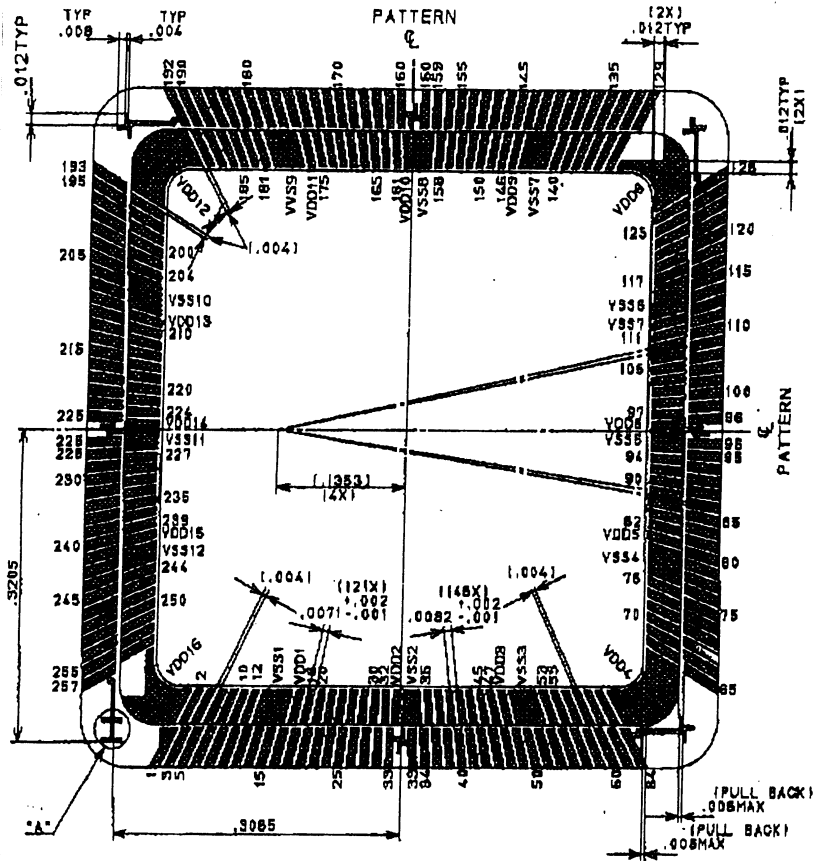
3	STAND OFF PIN	KOVAR	E RE DRAWING	MAX
2	PIN	KOVAR	D RE DRAWING	2/10
1	CERAMIC	BLACK ALUMINA	C RE DRAWING	2/10
			B RE DRAWING	2/10
			A RE DRAWING	2/10
			NEW DRAWING	2/10
DATE	NAME	DESCRIPTION	DATE	DESCRIPTION
10/11/91	N. L. T.	DESIGNED	10/11/91	DESIGNED
		CHECKED		CHECKED
		APPROVED		APPROVED
		DATE		DATE
		SCALE		SCALE



SSM P/N CPG29902

LATEST REVISION'S DESCRIPTION

E
CORRECT TARGET MARK DIM
B/G No.192) & B/G No.1.18



B/F ANGLE	B/F CENTER	B/F START	B/F END	B/F EDGES	B/F NO
1.575	.0122	.0081	.0163	33,96,160,225	
3.149	.0244	.0203	.0285	31,34,95,98,159,162,223,226	
4.721	.0367	.0326	.0408	29,36,93,100,157,164,221,228	
6.290	.0489	.0448	.0530	27,38,91,102,155,166,219,230	
7.855	.0612	.0571	.0653	25,40,89,104,153,168,217,232	
9.415	.0736	.0694	.0778	23,42,87,105,151,170,215,234	
10.968	.0860	.0818	.0902	21,44,85,108,149,172,213,236	
12.514	.0985	.0943	.1027	19,46,83,110,147,174,211,238	
14.051	.1111	.1069	.1153	17,48,81,112,145,176,209,240	
15.579	.1237	.1194	.1280	16,49,80,113,144,177,208,241	
17.096	.1365	.1322	.1408	15,50,79,114,143,178,207,242	
18.601	.1494	.1451	.1537	14,51,78,115,142,179,206,243	
20.093	.1623	.1579	.1667	13,52,77,116,141,180,205,245	
21.572	.1755	.1711	.1799	12,54,75,118,139,182,203,247	
23.036	.1887	.1842	.1932	11,55,73,120,137,184,201,249	
24.485	.2021	.1976	.2068	10,56,71,122,135,186,199,251	
25.918	.2157	.2111	.2203	9,56,69,124,133,188,197,253	
27.334	.2294	.2248	.2340	8,57,67,126,131,190,195,255	
28.733	.2433	.2386	.2480	7,57,65,129,129,192,193,257	

		.0020	.0202	VSS2, VSS5, VSS8, VSS11
0.787	.0055	.0020	.0080	VDD2, VDD6, VDD10, VDD14
2.361	.0166	.0130	.0202	32,97,161,224
3.934	.0278	.0242	.0314	30,35,94,99,158,163,222,227
5.505	.0389	.0353	.0425	28,37,82,101,156,165,220,229
7.072	.0501	.0465	.0537	26,39,80,103,154,167,218,231
8.635	.0619	.0577	.0649	24,41,88,105,162,169,216,233
10.192	.0728	.0680	.0762	22,43,88,107,150,171,214,235
11.742	.0839	.0803	.0875	20,45,84,109,148,173,212,237
13.284	.0953	.0917	.0989	18,47,82,111,146,175,210,239
14.816	.1068	.1031	.1105	VDD1, VDD3, VDD5, VDD7, VDD9 VDD11, VDD13, VDD15
		.1147	.1456	VSS1, VSS3, VSS4, VSS6, VSS7 VSS9, VSS10
20.834	.1537	.1499	.1575	12,53,75,117,140,161,204,246
22.306	.1657	.1619	.1695	10,55,74,119,138,183,202,248
23.763	.1778	.1739	.1817	8,57,72,121,136,185,200,250
25.204	.1900	.1861	.1939	6,59,70,123,134,187,198,252
26.629	.2025	.1985	.2065	4,61,68,125,132,189,196,254
28.037	.2150	.2110	.2190	2,63,65,127,130,191,184,256
		.1147	.1337	VSS12
19.348	.1418	.1380	.1456	244

3/4
← FAX-209115

E	RE DRAWING	MAY-17
D	RE DRAWING	JUN-17
C	RE DRAWING	JUL-17
B	RE DRAWING	AUG-17
A	RE DRAWING	SEP-17
0	NEW DRAWING	OCT-17

DESIGNED BY	APPROVED	DATE
DRAWN BY	CHECKED	
CUSTOMER	APPROVED	
PWG NO.	REV. NO.	
	SCALE	
	REV. NO.	
	SCALE	

PART NO. SHEET 2 OF 3



