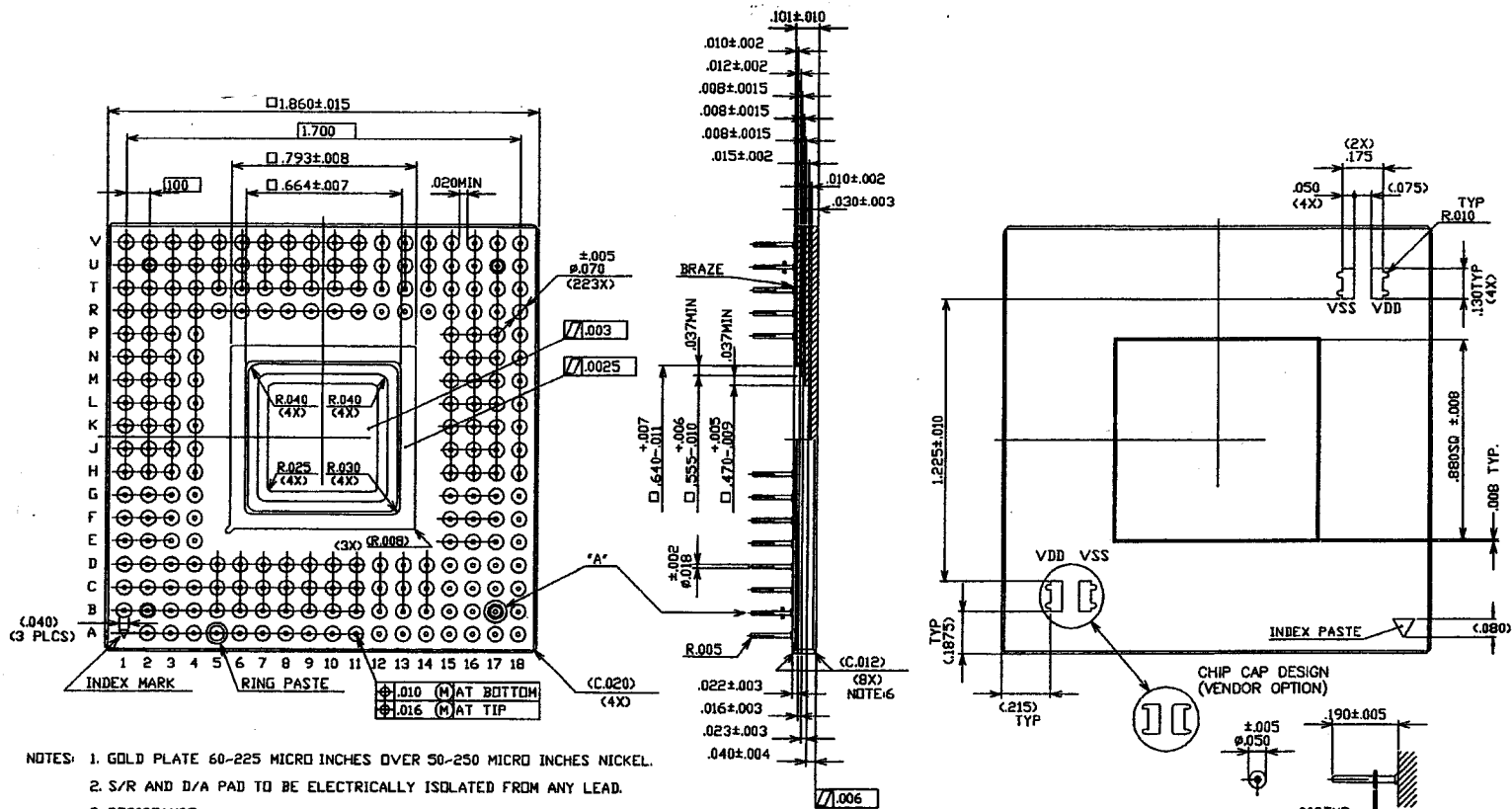


# SSM P/N CPG22309



- NOTES:
1. GOLD PLATE 60-225 MICRO INCHES OVER 50-250 MICRO INCHES NICKEL.
  2. S/R AND D/A PAD TO BE ELECTRICALLY ISOLATED FROM ANY LEAD.
  3. RESISTANCE  
 VSS PAD ----- 50m OHMS MAX  
 VDD PAD ----- 120m OHMS MAX (EXCEPT 4 CORNER PAD)  
 4 CORNER PAD ----- 50m OHMS MAX  
 ALL OTHER ----- 600m OHMS MAX

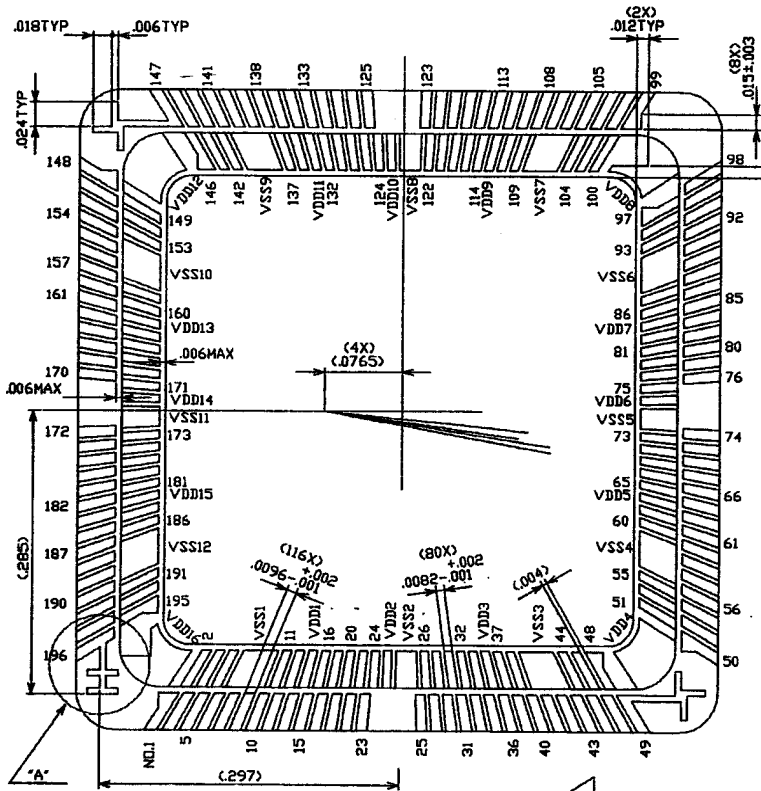
6. CERAMIC CHAMFER AT TOP & BOTTOM SURFACE. (8 PLCS) VENDOR OPTION.
7. THE NUMBER, LETTER AND TRIANGLE ORIENTATION OF PIN 1 INDEX IS A VENDOR OPTION.
8. REFERENCE VENDOR NTK: IPKY2F1-8322AC, KYOCERA: K95165.

5. ALL VIAS TO BE SOLID SUCH THAT VOIDING IN VIA WILL NOT REDUCE THE VIA CROSS SECTION BY GREATER THAN 20% OF VIA DIAMETER. (0/76 VIAS 3% LTPD)

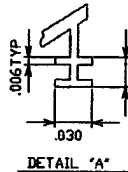
UNLESS OTHERWISE SPECIFIED DIMENSIONAL TOLERANCES		TITLE	
XXXX	+/- .005	223 CERAMIC PIN GRID ARRAY	
XXXX	+/- .001		
XXXX	+/- .0005		
DRAWER	DATE	PKG/DIE	CAVITY (0.470)
R.Mendoza		DWG NO.	REV. 5
APPROVAL	DATE	SCALE	SHEET 1 of 3



# SSM P/N CPG22309



B/F ANGLE	B/F CENTER	B/F EDGES		B/F NO.
		START	END	
3.245	.0204	.0156	.0252	25,74,123,172
5.405	.0341	.0292	.0389	23,27,72,76,121,125,170,174
7.559	.0478	.0429	.0526	21,29,70,78,119,127,168,176
9.704	.0616	.0567	.0664	19,31,68,80,117,129,166,178
11.836	.0754	.0705	.0803	17,33,66,82,115,131,164,180
13.954	.0895	.0845	.0944	15,35,64,84,113,133,162,182
16.054	.1036	.0986	.1086	14,36,63,83,112,134,161,183
18.133	.1179	.1128	.1229	12,38,61,87,110,136,159,185
20.189	.1324	.1273	.1375	10,40,59,89,108,138,157,187
22.220	.1471	.1419	.1522	9,41,58,90,107,139,156,188
24.222	.1620	.1567	.1672	8,42,57,91,106,140,153,189
26.196	.1771	.1718	.1825	7,43,56,92,105,141,154,190
28.137	.1925	.1871	.1980	5,45,58,94,103,143,152,192
30.045	.2082	.2027	.2138	3,47,52,96,101,145,150,194
31.918	.2242	.2186	.2299	1,49,50,98,99,147,148,196
30.999	.1908	.1861	.1954	2,48,51,97,100,146,149,195
29.107	.1768	.1722	.1813	4,46,53,95,102,144,151,193
27.182	.1630	.1586	.1675	6,44,55,93,104,142,153,191
23.234	.1363	.1190	.1540	VSS1,VSS3,VSS4,VSS6,VSS7,VSS9,VSS10,VSS12
19.172	.1104	.1062	.1146	11,39,60,88,109,137,158,186
17.103	.0977	.0935	.1019	13,37,62,86,111,135,160,184
15.013	.0851	.0810	.0893	VDD1,VDD3,VDD5,VDD7,VDD9,VDD11,VDD13,VDD15
12.903	.0727	.0686	.0768	16,34,65,83,114,132,163,181
10.776	.0604	.0564	.0645	18,32,67,81,116,130,165,179
8.636	.0482	.0442	.0523	20,30,69,79,118,128,167,177
6.486	.0361	.0321	.0401	22,28,71,77,120,126,169,175
4.327	.0240	.0200	.0280	24,26,73,75,122,124,171,173
2.164	.0120	.0080	.0160	VDD2,VDD6,VDD10,VDD14
-1.0826	-.0060	.0040	-.0160	VSS2,VSS5,VSS8,VSS11
		X-AXIS	Y-AXIS	B/F NO.
N/A	N/A	.2157	.2062	VDD4,VDD12
N/A	N/A	.2062	.2157	VDD8,VDD16



UNLESS OTHERWISE SPECIFIED DIMENSIONAL TOLERANCES		TITLE	
.XXX	+/- .005	223 CERAMIC PIN GRID ARRAY	
.XXX	+/- .003		
.XXX	+/- .001	REV. 5	
DRAWER	DATE	PKG/DIE	CAVITY (0.470)
R.Mendoza		DWG NO.	
ENGINEER	DATE	SCALE	SHEET 2 of 3
APPROVAL	DATE		
APPROVAL	DATE		



# SSM P/N CPG22309

PAD - PIN CONNECTION TABLE

PAD	PIN	PAD	PIN	PAD	PIN	PAD	PIN	PAD	PIN
1	D4	41	B14	81	L15	121	V12	161	M4
2	C3	42	C14	82	M18	122	U11	162	N2
3	B3	43	D13	83	M16	123	V11	163	M3
4	A3	44	A15	84	M17	124	T9	164	N1
5	D5	45	B15	85	M15	125	U10	165	L4
6	C4	46	D14	86	N18	126	R9	166	M2
7	B4	47	C15	87	N16	127	U9	167	L3
8	A4	48	A16	88	N17	128	T8	168	M1
9	C5	49	B16	89	N15	129	U8	169	K4
10	D6	50	D15	90	P18	130	R8	170	L2
11	B5	51	C16	91	P17	131	V7	171	K3
12	C6	52	C17	92	P16	132	T7	172	L1
13	A5	53	C18	93	R18	133	U7	173	K2
14	D7	54	E15	94	R17	134	R7	174	J2
15	B6	55	D16	95	P15	135	V6	175	J3
16	C7	56	D17	96	R16	136	T6	176	H2
17	A6	57	D18	97	T18	137	U6	177	J4
18	D8	58	F15	98	T17	138	R6	178	G1
19	B7	59	F16	99	R15	139	V5	179	H3
20	C8	60	E16	100	T16	140	U5	180	G2
21	A7	61	G15	101	U16	141	T5	181	H4
22	D9	62	E17	102	V16	142	V4	182	F1
23	B8	63	G16	103	R14	143	U4	183	G3
24	C9	64	E18	104	T15	144	T4	184	F2
25	B9	65	H15	105	U15	145	R5	185	G4
26	B10	66	F17	106	V15	146	V3	186	E1
27	A11	67	H16	107	R13	147	U3	187	F3
28	C10	68	F18	108	T13	148	R4	188	E2
29	B11	69	J15	109	T14	149	T3	189	E3
30	D10	70	G17	110	R12	150	T2	190	F4
31	A12	71	J16	111	U14	151	T1	191	D1
32	C11	72	G18	112	T12	152	P4	192	D2
33	B12	73	H17	113	V14	153	R3	193	D3
34	D11	74	H18	114	R11	154	R2	194	E4
35	A13	75	K16	115	U13	155	R1	195	C1
36	C12	76	J17	116	T11	156	P3	196	C2
37	B13	77	K15	117	V13	157	N4		
38	D12	78	K17	118	R10	158	P2		
39	A14	79	L16	119	U12	159	N3		
40	C13	80	L17	120	T10	160	P1		

VDD PINS	A2,A9,A17,B18,J18,L18,U17, V18,V9,V2,U1,J1,B1,
VSS PINS	A8,A10,A18,B17,K18,U18,V17, V10,V8,V1,U2,K1,H1,B2,

UNLESS OTHERWISE SPECIFIED DIMENSIONAL TOLERANCES		TITLE	
<small>JXX +/- J05 JXXX +/- J001 JXXX +/- J005</small>		223 CERAMIC PIN GRID ARRAY	
DRAWER R.Mendoza	DATE	PKG/DIE CAVITY (0.470)	REV. 5
ENGINEER	DATE	DWG NO.	
APPROVAL	DATE	SCALE	SHEET 3 of 3
APPROVAL	DATE		

